

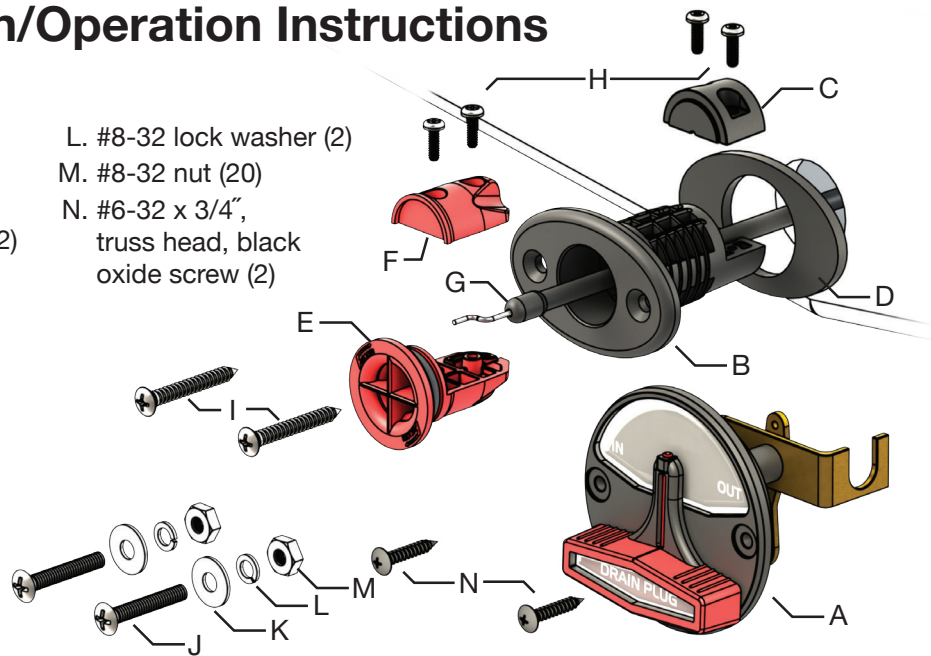


Remote Drain Plug Installation/Operation Instructions

Parts Included:

- A. Actuator
- B. Drain housing
- C. Drain cap
- D. Gasket
- E. Plug
- F. Plug cap
- G. Cable
- H. #4-40 x 1/2", pan head screw (4)
- I. #8 x 7/8", self-tapping screw (2)
- J. #8-32 x 7/8", machine screw (2)
- K. #8-32 washer (2)

- L. #8-32 lock washer (2)
- M. #8-32 nut (20)
- N. #6-32 x 3/4", truss head, black oxide screw (2)

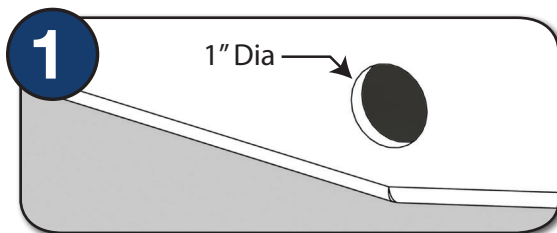


Tools Required:

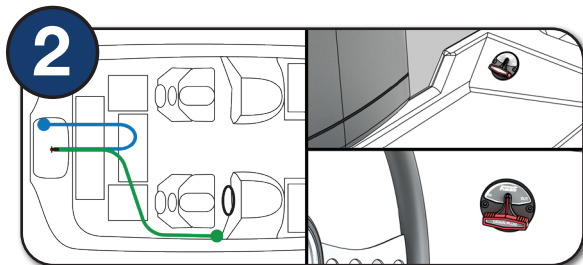
- Drill
- 1-3/4" hole saw
- 1/8" drill bit
- Round file
- Phillips screwdriver
- Pencil

Please read all instructions before beginning this project. Only use hand tools to tighten screws.

Installation



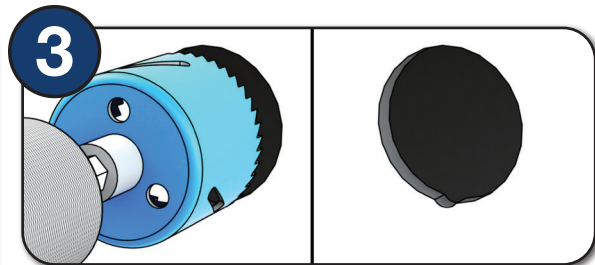
Remove your existing drain plug and **insure that the mounting hole is a full 1" diameter**. Remove any remaining sealant. If it is necessary to enlarge the mounting hole, we recommend a step or Unibit that has the largest size being 1" diameter. For example: a 7/16" to 1". A round file can also be used until the plug assembly easily fits. Do not mount at this time.



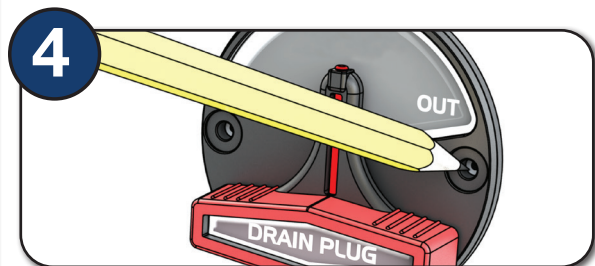
Two popular areas for the cable actuator is the starboard gunnel near the driver and in the port side splashwell area. The latter is convenient when accessing the transom savor, tie-down straps and engine tilt. In either case, the cable should be able to make a straight run out through the drain plug mounting hole.

Best practice tip: Splash Well Actuator mounting.

A material thickness of 3/4" or less is needed for proper actuator function in the splash well. Some boat manufacturers may have splash well material thicknesses that exceeds 3/4" in depth. If you are uncertain, check with the manufacturer.



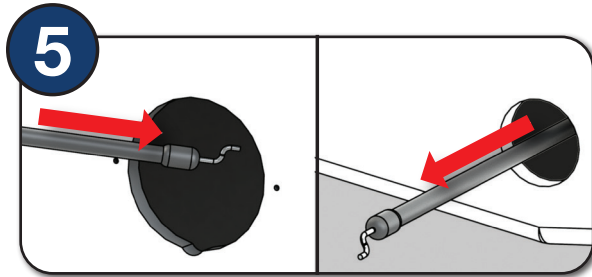
Use a 1-3/4" hole saw to drill the mounting hole for the actuator. Use a round file to slightly enlarge the bottom or 6 o'clock position of the mounting hole for clearance of the knob boss of the actuator. The actuator should fit without excessive force.



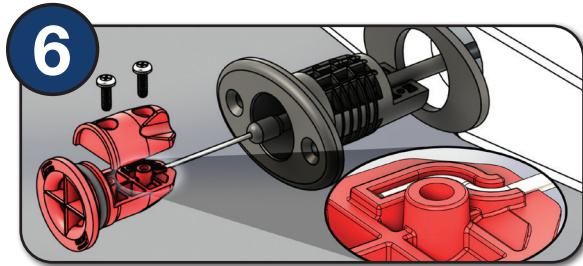
Mark and drill the two pilot holes for the mounting screws using a 1/8" bit. Do not install at this time.

Best practice tip: Keep lubricated.

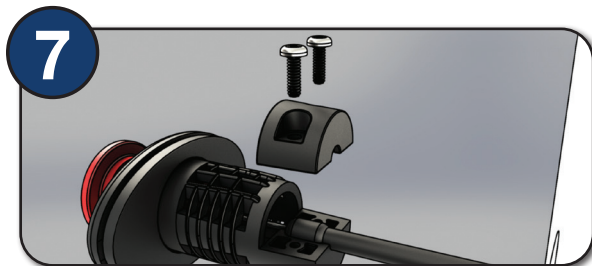
To keep your drain plug working properly, re-apply O-ring lubricant to the O-ring and inside of the housing at least one time per month, or more based on usage. We use and recommend Dow Corning Molykote 55 O-ring grease and is available on our Flow-Rite website at www.flow-rite.com. The part number is MD-00123 for a 5.3 oz tube.



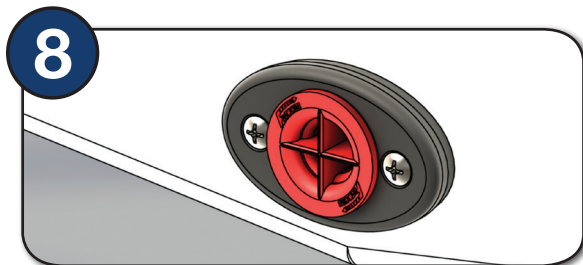
Route the cable through the actuator mounting hole then out through the drain plug mounting hole.



Slide the cable through the gasket and plug housing body as shown. Carefully lay the “Z” bend of the control cable into the “Z” groove molded into the plug body as shown and secure the plug cap with two screws (G). Assure screws are tight and there is no “slip” between the plug and plug cap.



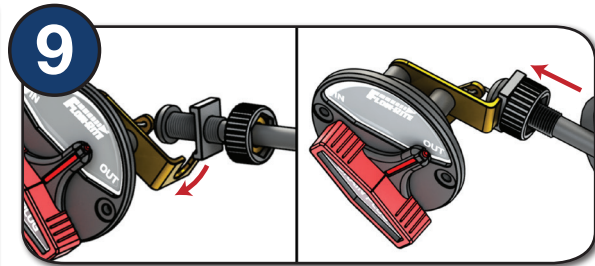
Position the nub area of the cable jacket into the plug housing body as shown and attach the housing cover with the remaining two screws (G). Assure screws are tight and there is no “slip” between the drain housing and drain cap.



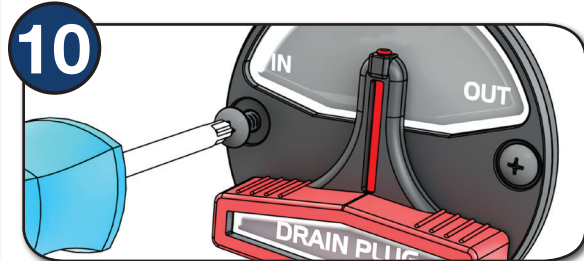
Secure with the appropriate stainless steel mounting hardware. Self-tapping screws (H) are provided for most fiberglass installations and machine screws (I), nuts (L) and washers (J,K) are provided for aluminum installations.

Best practice tip: Keep it clean.

Periodically check and keep the bilge/drain plug area free of debris for proper functioning of the remote drain plug.

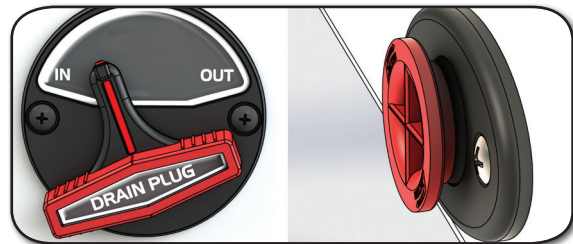


Attach the cable to the actuator as shown.

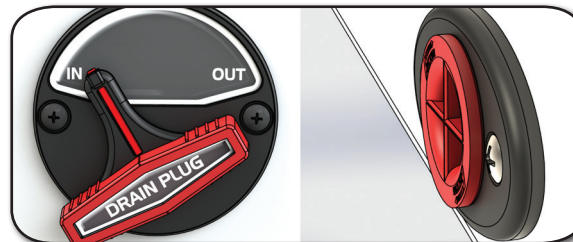


Gently push the actuator and cable into the actuator mounting hole and secure with screws (M).

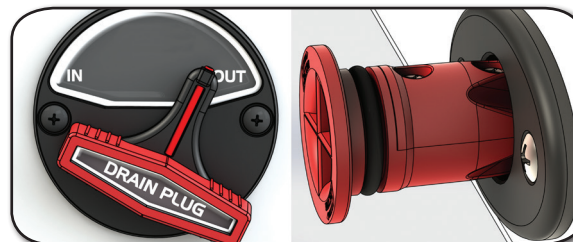
Operation



When moving the actuator to the “IN” position, resistance will be felt when the o-ring engages with the plug housing.



Be sure to rotate the actuator past this resistance until you feel the plug fully seat into the housing. It is recommended to practice this a few times on land before launching the boat for the first time.



To open the drain, simply rotate the actuator to the “OUT” position.