



# QWIK-LOK®

## What is Qwik-Lok?

Qwik-Lok® is a quick connect/disconnect marine plumbing system that can provide increased productivity and higher quality and value while simultaneously reducing costs.

The heart of the Qwik-Lok system is the innovative Qwik-Lok socket that fits industry-standard marine hose in popular 3/4", 1-1/8", and 1-1/2" sizes. Qwik-Lok's numerous benefits make it much more than just a quick disconnect plumbing system.

### Latching Arm

Holds socket securely in place

### Locking Ring

Locks latching arms and is also used for 2-finger socket removal

### Hose Stop

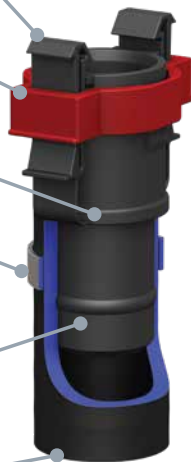
### Clamp

Made of stainless steel for maximum corrosion resistance

### Raised Rib

Designed to eliminate leaks and the need for sealants

### 1-1/8" Hose



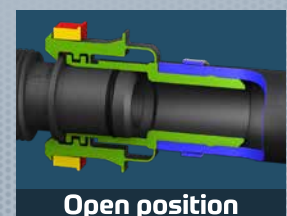
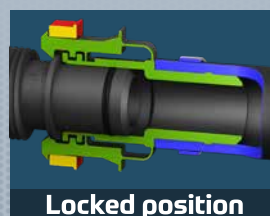
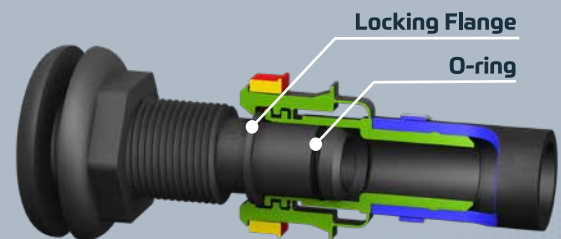
## BENEFITS

- Superior O-ring seal
- Sockets can be installed at bench or on deck & then snapped into place
- Eliminates crimping in hard to reach areas
- Reduces warranty claims and labor costs
- Builder, dealer, & user-friendly
- Proven performance and reliability
- Allows hose to swivel and relieve stress from pump outlets & other fittings
- Eliminates silicone & other sealants at hose connections

## Engineered to Save Time

Qwik-Lok fittings are easily installed in place of standard barbed fittings. Qwik-Lok sockets are installed to the hose ends whether it's pre-assembled in our factory or done at the boat or on the work bench. You no longer need to crimp or tighten a hose clamp at arms length in hard to reach areas. With Qwik-Lok:

- Improve Consistency
- Eliminate Redundant Labor
- Eliminate Material Waste
- Reduce Labor Costs
- Reduce parts picking and clerical management tasks
- Reduce Warranty Claims



## Pre-Assembled Kits

Qwik-Lok® kits contain all fittings, valves, aerators and hoses tailored to a specific boat model or models in a single box with a single part number. All hose sections are pre-measured, cut, assembled with Qwik-Lok sockets, pneumatically crimped, tested, marked with length, and lubed. This is truly the best way to take advantage of what Qwik-Lok has to offer.

- Eliminates wasteful redundant tasks commonly done on the line
- Eliminates all hose waste
- Maximizes labor savings
- Ensures consistent accuracy
- Ensures all connections are uniform regardless of location or accessibility
- Available with sub-kits for satellite sub-assembly work areas
- Drawings furnished for each kit, useful to engineering, production, purchasing, and customer service
- Kit changes or model changes can be made in minutes



## Converting to Qwik-Lok is Painless

Converting to Qwik-Lok is just a matter of replacing barbed fittings with Qwik-Lok fittings and specifying hose lengths. Our customer service and sales team is one call away to assist.

**1. Field Survey**  
Our team will prepare field sketches and a bill of materials for each boat model.



**2. Establish Hose Lengths**  
Our team will assist in plumbing the first boat of each model to establish accurate hose lengths.



**3. Test Kit**  
Our staff will prepare a final test kit for your final approval. We will also prepare and establish a kit number and labeling to meet your needs.



**4. Building Production Kits**  
When the production kits are ready to ship, the product label will tell you the latest revision, kit numbers, boat models it fits, PO # and barcode if desired.





P/N MK-335-B-AC  
P/N 110-0029  
NAVIGATOR 165