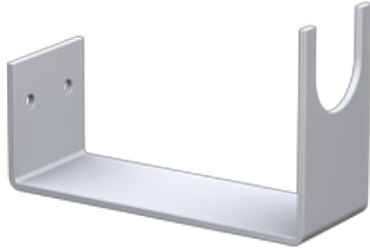


Mounting Brackets

MD-034 Mounting Bracket, U-Shaped



- Used to support valve / pump assembly
- Side mount
- Two 3/16" mounting holes

MD-035 Mounting Bracket, L-Shaped



- Used to support valve / pump assembly
- Bottom mount
- Two 3/16" mounting holes

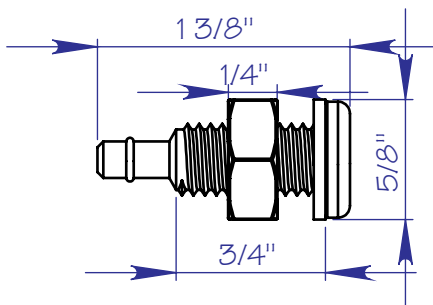
Air Tubing and Accessories

MD-055 Air-intake tubing, (order length in feet)



- 3/16" I.D. clear PVC tubing for remote air-intake
- Used with Power-Jet Venturi Aerator and MA-012-B air-intake assembly

MA-012-B Air-intake Assembly



- Used with MD-055 air-intake tubing to provide remote air to Power-Jet Venturi Aerator
- Intake hole is 3/16" Allen for installation convenience
- Compatible with Power-Jet Aerator domed decals.

Miscellaneous Parts & Hardware

MISC

Power-Jet Aerator Air Intake Decals

Made of special domed decal material laminated to a self-adhesive, polycarbonate backing. Used to give air intake MD-012-B a superior appearance. Can also be used for mounting MD-012-B air intake to boat gunwale when limited mounting access doesn't allow use of mounting nut. See Power-Jet Venturi Aerator literature for installation details. Although stiff enough to provide a suitable mounting plate, it can be mounted to shallow curved surfaces for custom look.

DCL-PJ1-G Decal, Single, Gold, for PJA Air Intake



- Dome decal for use with Power-Jet aerator air intake
- Single intake design with gold lettering on black.

DCL-PJ2-G Decal, Dual, Gold, for PJA Air Intake



- Dome decal for use with Power-Jet aerator air intake
- Dual intake design with gold lettering on black.

DCL-PJ1-W Decal, Single, White, for PJA Air Intake



- Dome decal for use with Power-Jet aerator air intake
- Single intake design with white lettering on black.

DCL-PJ2-W Decal, Dual, White, for PJA Air Intake



- Dome decal for use with Power-Jet aerator air intake
- Dual intake design with white lettering on black.

Replacement Parts

MA-065 3/4" Chrome Bezel



- Chrome plated ABS bezels securely snap in place
- For use with MA-016 & MA-028 series thru-hulls

MA-066 1-1/8" Chrome Bezel



- Chrome plated ABS bezels securely snap in place
- For use with MA-063-QLB & MA-064-QLB thru-hulls

MD-014 O-ring, for 3/4" Qwik-Lok Socket



- For use with 3/4" Qwik-Lok Parts
- High quality Viton material

MD-066 O-ring, for 1-1/8" Qwik-Lok Socket



- For use with 3/4" Qwik-Lok Parts
- High quality Viton material

MD-001 O-ring, for PSA and PSN Aerator Heads



- Special Teflon coating

Hose and Qwik-Lok Assembly Components

Hose

Our hose is made in USA with unmatched consistency in dimension and quality. This consistency ensures perfect fit to all Flow-Rite barb and Qwik-Lok components.

MD-H06 3/4", (order length in feet)



MD-H09 1-1/8", (order length in feet)



Marked Engineering Hose

Marked Engineering hose is not only the most accurate, but the easiest method for the boat builder to establish precise hose lengths for a new or existing boat model. An invaluable tool and since it's produced on our same computerized hose measuring, marking and cutting machine, all subsequent orders for a given length will be consistently accurate to match the length determined with the Marked Engineering Hose.

MD-H06M 3/4", (order length in feet)



MD-H09M 1-1/8", (order length in feet)



MD-123 O-ring Lube



MD-110 Crimping tool



MD-111 Crimp Clamp, 3/4"

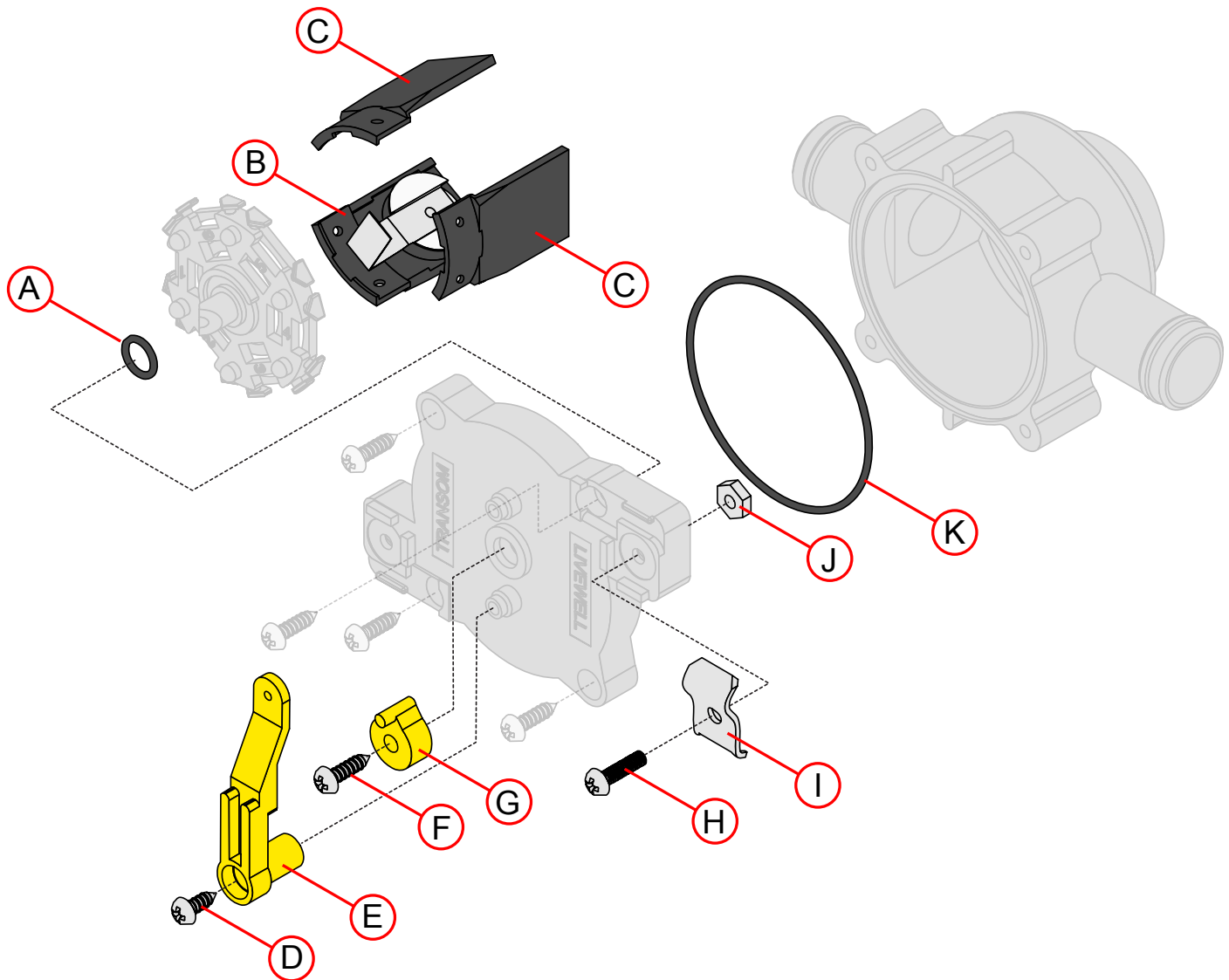


MD-130 Crimp Clamp, 1-1/8"



MA-060 Valve Repair Kit

The valve repair kit includes 2 ea of the standard and button flappers that will provide enough to replace any requirement for V1, V2, V3 and V4 valves, with the exception of pre 1998 versions of V1; replace with new V1 valve. (See chart on reverse). The valve arm and link will not fit the older RCV-75 valves, but the standard flappers, O-rings and cable mounting bracket will fit all with the above mentioned exception.



- A. Small O-ring
- B. Button flapper - 2 qty.
- C. Flapper - 2 qty.
- D. 6 x 5/16" sheet metal screw
- E. Arm
- F. 6 x 1/2" sheet metal screw

- G. Link
- H. #6 x 1/2" machine screw
- I. Clamp
- J. #6-32 nut w/ insert
- K. Large O-ring

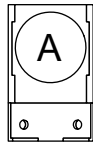
Flapper Replacement Guide

Flapper Positions

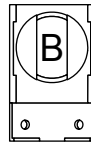
The following chart displays which flapper should go in which of the six positions on the rotor for each of the five Flow-Rite valves. Use of this chart is only necessary if you do not know the positions of your original flappers.

		Rotor Position #					
		1	2	3	4	5	6
Valve #	V1			B			B
	V2					A	A
	V3		B		A		A
	V4					B	B
	V5		C	C			

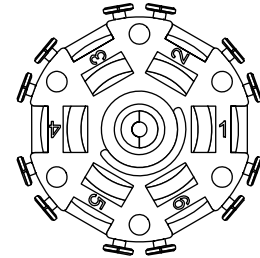
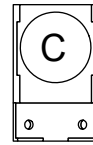
Standard flapper



Spring flapper

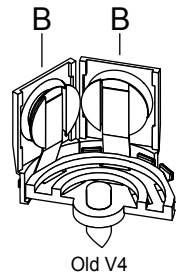
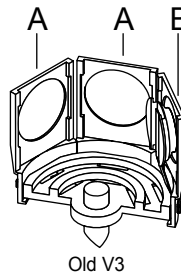
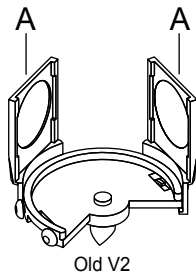


V5 flapper

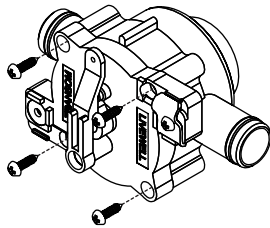


Older Model Valves

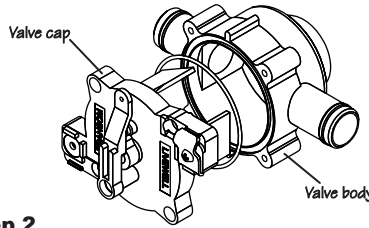
It is possible that you will have one of our older model valves containing one of the following rotors. The positions on these rotors are not numbered, therefore, we have included the following diagrams for your reference.



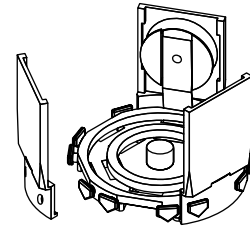
Replacement Instructions



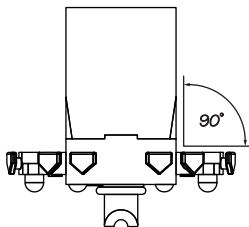
Step 1
Remove the four valve cap screws. Be sure not to over tighten these screws when reassembling.



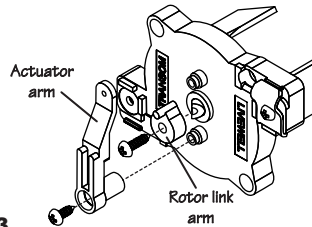
Step 2
Pull valve cap from valve body. Note the proper position of the large o-ring between the cap and body. Be very careful to keep this o-ring in place when reassembling.



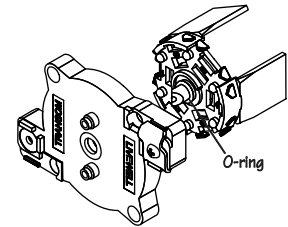
Step 5
Remove the old flappers from the rotor and replace them one at a time. It is very important that the new flappers are in the same positions as the old ones.



Step 6
Be sure that the flappers are square to the rotor and securely in place. Reassemble the valve by reversing steps 1 through 4.



Step 3
Remove the actuator arm and the rotor link arm. Remember that the small screw is for the large arm and the large screw is for the small arm. Although the link arm screw should be fairly snug, be sure not to over tighten the actuator arm screw when reassembling.



Step 4
Push the rotor/flapper assembly out of the valve cap. Note the proper position of the small O-ring on the rotor stem.