

Pro-Fill On-Board Battery Watering System INSTALLATION & OPERATION

Package Contents

- A.** Pro-Fill valves (6)
- B.** Flexible manifolds (2)
- C.** Quick connect coupler (1)
- D.** Dust cap (1)
- E.** Red end caps (9)
- F.** Pro-Fill tubing (5')

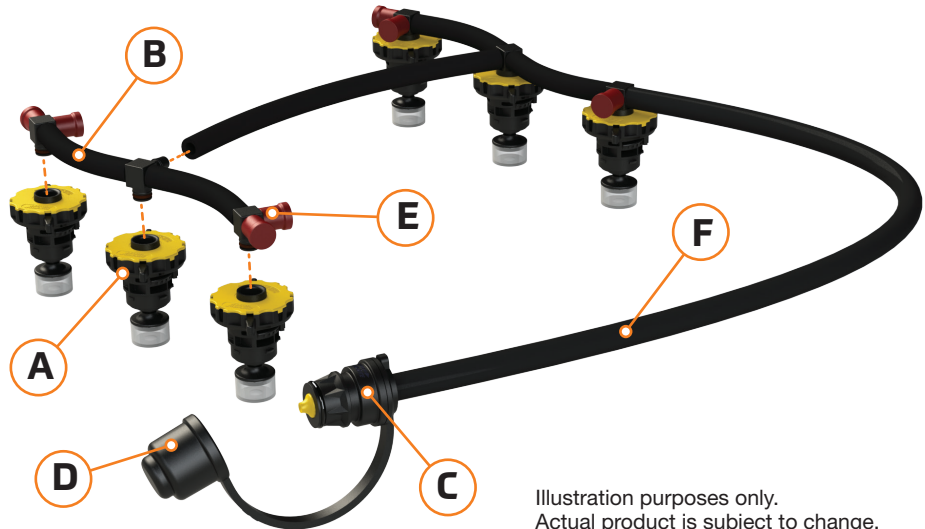
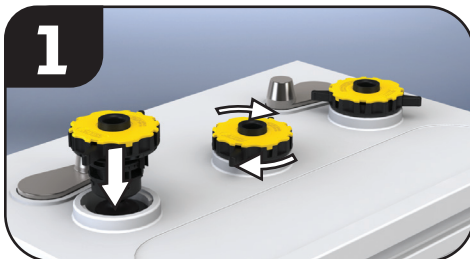


Illustration purposes only.
Actual product is subject to change.

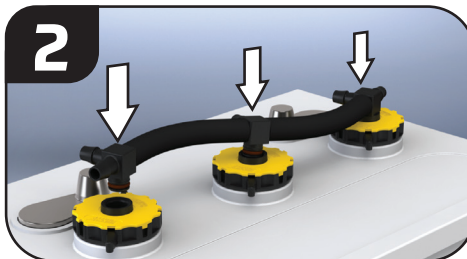
INSTALLATION

Important

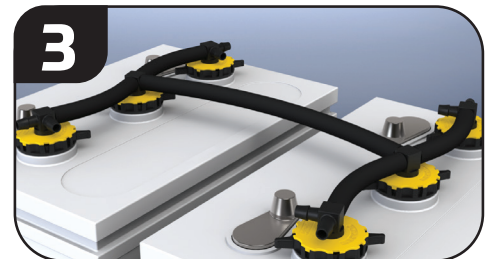
Prior to initial installation, inspect the existing battery electrolyte level. If the battery has been neglected and the electrolyte level is extremely low, manually fill each cell so all plates are covered. Next, charge the batteries before installing and using Pro-Fill. Filling a battery that has been neglected and then charging it can cause the water level to expand during the charging process, thereby resulting in the loss of electrolyte. Once Pro-Fill is installed, monthly filling is recommended and will prevent a low electrolyte level. Always fill after the battery is fully charged.



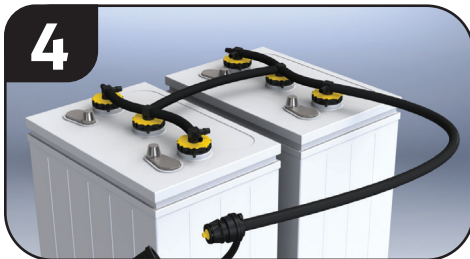
Remove existing vent covers and install Pro-Fill valves by inserting into battery and turning 1/4 rotation to lock into place.



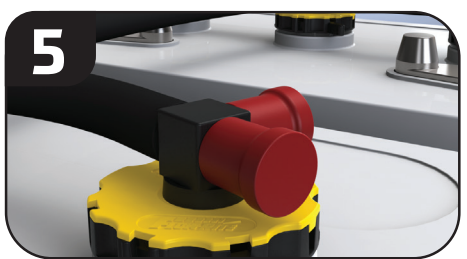
Install the flexible manifold by carefully pushing and rotating swivel tee into each valve until it snaps into place.



Link manifolds/valves together with Pro-Fill tubing. Cut the desired length of tubing from the open end of the included 5' section.



Attach fill line to an open barb. If you are installing on more than two batteries, try to locate the fill line towards the middle of the system. Do not connect more than six batteries together.



Cover any remaining barbs with red end caps and installation is complete.

Pro-Fill On-Board Battery Watering System OPERATION

OPERATION

Important: Batteries should only be filled after charging.



Insert the squeeze bulb filler assembly into a jug of distilled water. Prime bulb by squeezing until it is filled with water. Water jug must be left below the top of the batteries to prevent siphoning.



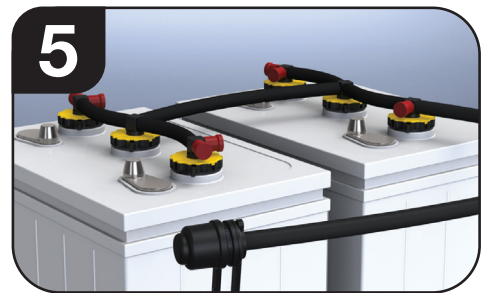
Remove the dust cap from the water supply line and connect it to the squeeze bulb filler assembly by snapping the quick couplers together.



Squeeze the bulb with firm pressure to begin pumping water into the battery cells. When the bulb becomes hard, all cells are full.



Immediately disconnect the squeeze bulb filler assembly from the water supply line and replace the dust cap.



Any water remaining in the squeeze bulb filler assembly may be pumped back into the distilled water jug.

⚠ DANGER / POISON		
SHIELD EYES EXPLOSIVE GASES CAN CAUSE BLINDNESS OR INJURY	NO • SPARKS • FLAMES • SMOKING	SULFURIC ACID CAN CAUSE BLINDNESS OR SEVERE BURNS

Notes:

1. Do not store hand pump in battery compartment.
2. Do not leave hand pump connected to batteries after filling is complete.
3. Winterizing: Your Pro-Fill RV system is designed to be left on your batteries while your vehicle is in winter storage, however, the system will not be operational while the temperatures are below freezing.



Flow-Rite Controls
960 74th St. SW
Byron Center, MI 49315
PH: 616-583-1700
www.flow-rite.com



US & foreign patents
and patents pending