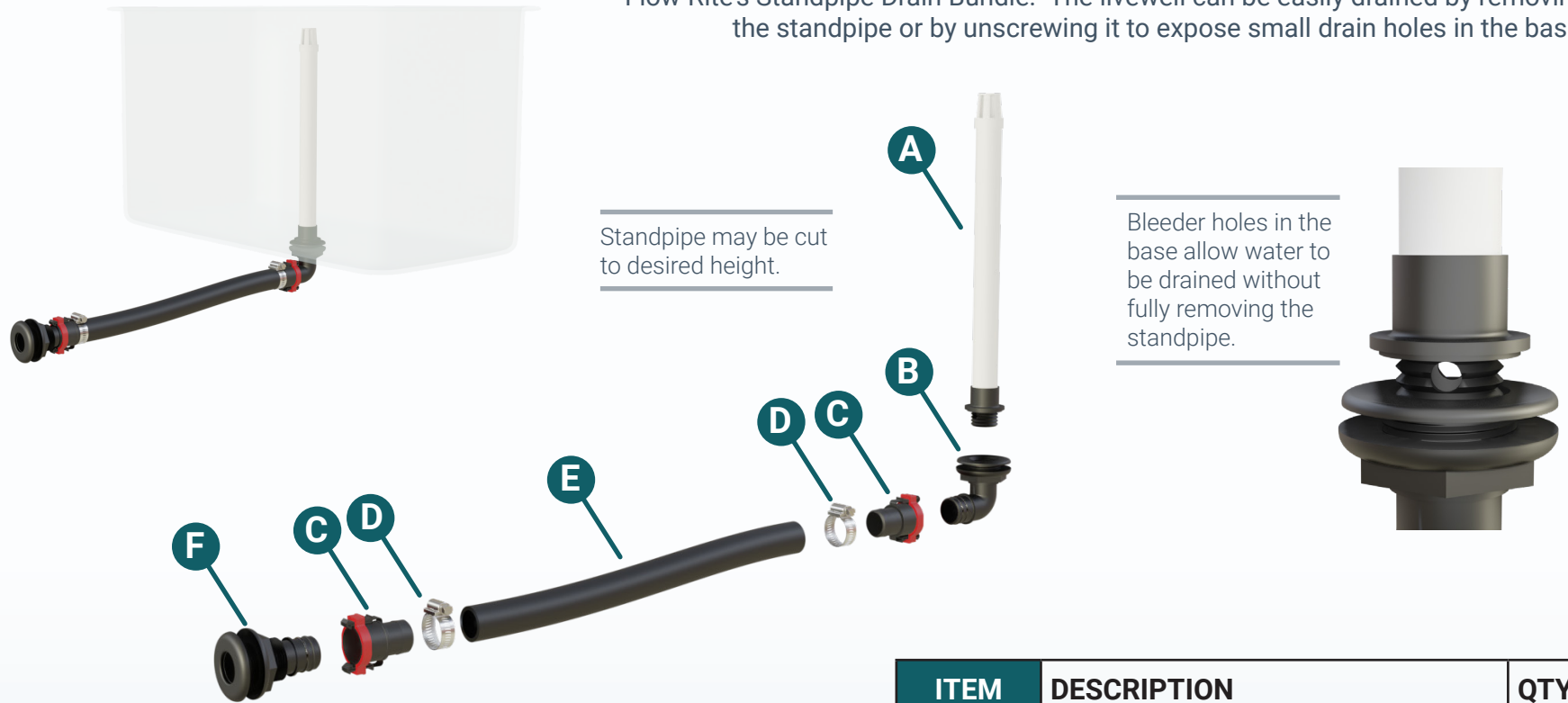




STANDPIPE DRAIN BUNDLE

1-1/8" Qwik-Lok™, MB-001

Keep your fish healthy and maintain a consistent water level in your livewell with Flow-Rite's Standpipe Drain Bundle. The livewell can be easily drained by removing the standpipe or by unscrewing it to expose small drain holes in the base.



INSTALLATION TIPS:

- Standpipe may be cut to desired height using a PVC cutting tool.
- Secure all fittings. Marine sealant may be used with thru-hull fittings.
- Once assembled, slide Qwik-Lok locking ring forward, into the locked position.
- Cut hose to desired length.

ITEM	DESCRIPTION	QTY
A	12" Standpipe	1
B	1-1/8" Thru-hull, elbow	1
C	Qwik-Lok socket, straight	2
D	Hose Clamp	2
E	6 feet of 1-1/8" Hose	1
F	1-1/8" thru-hull, straight	1