



MARINE WATER SYSTEM SOLUTIONS

Qwik-Lok[®] Marine Plumbing

SeaLok[™] Remote Drain Plug

Actuators, Valves, & More



November 2022



Flow-Rite Headquarters

960 74th Street SW
Byron Center, MI 49315 USA
(616) 583-1700
customerservice@flow-rite.com



Made in USA



**WEST
MICHIGAN'S
BEST AND
BRIGHTEST
COMPANIES
TO WORK FOR**

Who We Are

Flow-Rite® has grown substantially over the past 40 years. From a humble start in 1981, to our impressive 105,000 sq. ft. state-of-the-art manufacturing facility, we continue to see many opportunities for growth. As a vertically integrated company, we design, manufacture and market fluid control devices for lead-acid batteries, recreational fishing boats, and hydroponics.

Manufacturing Excellence

Our products are solely our own proprietary developments protected by over 50 U.S. patents and hundreds of international patents. Our mold making shop and robotic state-of-the-art plastic injection molding operation in Byron Center, Michigan, allows us to operate this department “lights out” 24/7. Through this automation we can meet our growing volume requirements while delivering the best performing, highest quality products. This means our “Made in the U.S.A.” label will continue to be the way we proudly work.



We are a niche manufacturing and solutions company.



One of the 101 Best and Brightest Companies to Work for in West Michigan for the past four consecutive years.



Niche:
Water. Done Differently.



Passion:
Change Lives.
Transform the World.

Our Team

Our associates are the essence of who we are. Our team of dedicated, motivated, and disciplined individuals create exceptional products and outstanding service for our customers. As an organization, we are committed to empowering each individual with the tools necessary to excel in their position.

Giving Back

We are passionate about being stewards in our local community. We do this by participating in numerous volunteer opportunities with organizations like Habitat for Humanity, Ronald McDonald House, Feeding America, and more. Not only do we get to help others, but we also get to grow as a team through these experiences.

Follow us on
social media:



Table of Contents

Company Information	2
Ordering and Processes	27
Product Spotlight	4
Qwik-Lok® Plumbing Manifold	5
1-1/2" Fittings	6
Qwik-Lok® Sockets	6
Connectors and Adaptors	6
1-1/8" Fittings	7
Qwik-Lok® Sockets	7
Thru-Hull Fittings	8
Standpipes	8
Connectors and Adaptors	9
Drain Screens and Plugs	9
3/4" Fittings	10
Qwik-Lok® Sockets	10
Thru-Hull Fittings	10
Connectors and Adaptors	11
Drain Fittings	12
Drain Screens and Plugs	12
Other Essentials for 1-1/2", 1-1/8", and 3/4"	13
Aerators	14
PowerStream Aerator	14
PowerStream Nozzle	15
Pump-Out Aerator	15
Power-Jet Aerator	16
Power-Jet Replacement Parts	16
Spray Head Aerators	17
Valves, Actuators and Cables	18
Valves	18-21
Actuators	18-21
Control Cables	21
Mounting Brackets	21
Valve and Actuator Information	22
ProTimer & ProTimer Plus+	23
Vortex	23
SeaLok™ Remote Drain Plug	24
Replacement Parts and Hardware	25
Labels & Decals	25

members of:





Product Spotlight

REMOTE DRAIN PLUG

Never Worry About Forgetting Your Drain Plug Again!

- No lying on a wet boat ramp to put in or take out a drain plug
- Easily open or close the drain plug from your console
- Fresh or salt water use

See more on page 24



PROTIMER AND PROTIMER PLUS+

Automatically turn your pump on and off!

- Helps keep fish healthy and stress-free
- Ideal for tournament fishing
- For use with any livewell recirculation pump or Flow-Rite valve system with RECIRC mode

See more on page 23



1-1/2" x 1" FITTINGS

Qwik-Lok Fittings

- Ideal for ballast applications
- Four locking fingers for maximum engagement
- Fits 1" marine hose

See details on page 6





MARINE PLUMBING MANIFOLD

Relax on the water with our NEW Qwik-Lok® Plumbing Manifold



1 1/2" QL-T X 1 1/8" Qwik-Lok

MA-294

1 1/2" QL-T X 3/4" Qwik-Lok

MA-295

1-1/2" QL End Cap

MA-296

Let's Build Boats Better!

- Streamline plumbing processes
- Non-corrosive in Fresh & Salt Water applications
- Empowers boat builders with end-to-end solutions



Enhanced Safety

Reducing need for drilling through hulls decreases potential leak points, increases installation ergonomics, and reduces risk of laborer injury.



Qwik-Lok® Modular Design

Patented quick-connect system is easier to assemble and disassemble, saving time & labor.



Hull Aesthetics & Performance

Reducing thru-hulls increase hull profile and 'curb appeal' while increasing hull hydrodynamics.



Built-to-Spec

Manifold systems are tailor-made to each boat, ensuring maximum fluid dynamics performance.

QWIK-LOK®

Faster water flow to your marine plumbing systems



4 Locking Fingers

- Plug-and-Play Design
- Increased Flow Rate
- Fits Industry-Standard Hose

1-1/2" FITTINGS



1-1/2" Qwik-Lok straight

MA-150



1-1/2" Qwik-Lok elbow

MA-151



1-1/2" Qwik-Lok tee

MA-288



1-1/2" 12 NPT x 1-1/2" Qwik-Lok male

MA-285



1-1/2" 12 UNF x 1-1/2" Qwik-Lok male

MA-286



1-1/2" 12 UNF x 1-1/2" Qwik-Lok male, elbow

MA-287



1-1/2" Qwik-Lok male x male adapter

MA-281



1-1/2" Qwik-Lok male x male bulkhead

MA-282



1-1/2" Qwik-Lok x 1-1/2" 12 UNF

MA-289



1-1/2" Qwik-Lok x 1" straight

MA-292



1-1/2" Qwik-Lok x 1" elbow

MA-293



QWIK-LOK®

Quick Connect for Marine Plumbing Systems

Qwik-Lok® is a quick connect/disconnect marine plumbing system and method that can provide increased productivity and higher quality and value while simultaneously reducing costs.

The heart of the Qwik-Lok system is the innovative Qwik-Lok socket that fits industry-standard marine hose in popular 3/4", 1-1/8", and 1-1/2" sizes. Qwik-Lok's numerous benefits make it much more than just a quick disconnect plumbing system.

Latching Arm

Holds socket securely in place

Locking Ring

Locks latching arms and is also used for 2-finger socket removal

Hose Stop

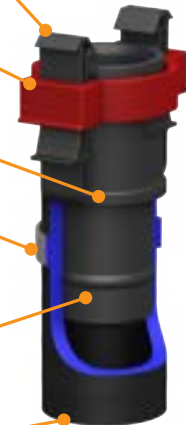
Clamp

Made of stainless steel for maximum corrosion resistance

Raised Rib

Designed to eliminate leaks and the need for sealants

1-1/8" Hose



QWIK-LOK SOCKETS



1-1/8" Qwik-Lok socket, straight

MA-040



1-1/8" Qwik-Lok socket, elbow

MA-049

1-1/8" FITTINGS

THRU-HULL FITTINGS



1-1/8" Qwik-Lok straight flanged thru-hulls

Black	MA-041-QLB
White	MA-041-QLW
Chrome	MA-063-QL

- Requires 1-1/2" mounting hole
- Requires MA-040 or MA-049 Qwik-Lok socket
- Compatible with MA-045 push-in drain plug and MA-046 push-in strainer (excluding MA-063 chrome thru-hull)
- Chrome plated ABS bezels securely snap in place (replacement bezel MA-066)



1-1/8" Qwik-Lok elbow double nut thru-hull MA-048

- Requires 1-1/2" mounting hole
- Requires MA-040 or MA-049 Qwik-Lok socket



1-1/8" Qwik-Lok threaded (internal) flanged thru-hulls

Straight	MA-043-QLB
Elbow	MA-044-QLB

- Requires 1-1/2" mounting hole
- Requires MA-040 or MA-049 Qwik-Lok socket
- Compatible with MA-STDP-12 standpipe & MA-050 screw-in drain plug



1-1/8" Qwik-Lok elbow flanged thru-hulls

Black	MA-042-QLB
White	MA-042-QLW
Chrome	MA-064-QL

- Requires 1-1/2" mounting hole
- Requires MA-040 or MA-049 Qwik-Lok socket
- Compatible with MA-045 push-in drain plug and MA-046 push-in strainer (excluding MA-064 chrome thru-hull)
- Chrome plated ABS bezels securely snap in place (replacement bezel MA-066)



1-1/8" Thru-Hull Gasket

MD-00212

STANDPIPES



Standpipe

8 inches	MA-STDP-08
10 inches	MA-STDP-10
12 inches	MA-STDP-12
18 inches	MA-STDP-18

- Compatible with MA-043-QLB and MA-044-QLB threaded thru-hulls
- Features bleeder holes for draining without removal

CONNECTORS AND ADAPTORS



1-1/8" Qwik-Lok x 1/2" NPT

MA-097

- Commonly used on positive displacement pumps
- Requires MA-040 or MA-049 Qwik-Lok socket



1-1/8" Qwik-Lok x 3/4" NPT

MA-098

- Commonly used in wake ballast tanks and bags
- Requires MA-040 or MA-049 Qwik-Lok socket



1-1/8" Qwik-Lok x 1" NPT

MA-099

- Commonly used in wake ballast tanks and bags
- Requires MA-040 or MA-049 Qwik-Lok socket



1-1/8" Qwik-Lok tee

MA-047-QLB

- Combined with MA-040 and/or MA-049 sockets, is very versatile, offering numerous configurations



1-1/8" Bulk head, double-ended Qwik-Lok with flange and nut

MA-072-QLB

- Requires 1-1/2" mounting hole
- Requires MA-040 and/or MA-049 Qwik-Lok sockets



Adaptor 1" NPT Male X 1-1/8" Barb

MD-00243



1-1/8" Qwik-Lok Male Fitting

MA-244



Rule Pump Adaptor 1-1/8" Qwik-Lok to 1" NPSM, Straight

MA-263

DRAIN SCREENS AND PLUGS



Push-in Strainer

MA-017

- Stainless steel screen
- O-ring seal



Push-in drain plug

MA-045

- Double O-ring design
- Compatible with MA-041 and MA-042 series thru-hulls



Screw-in drain plug

MA-050

- Compatible to MA-043-QLB & MA-044-QLB threaded thru-hulls
- Features bleeder holes for draining without removal



Plug Assembly, 1-1/8" Qwik-Lok

MA-115

3/4" FITTINGS

QWIK-LOK SOCKETS



3/4" Qwik-Lok socket, straight

MA-014



3/4" Qwik-Lok socket, elbow

MA-025

THRU-HULL FITTINGS



3/4" Straight flanged thru-hulls

	Qwik-Lok	Barbed
Black	MA-011-QLB	MA-011-B
White	MA-011-QLW	MA-011-W
Chrome	MA-016-QL	N/A

- Compatible with MA-018 snap-in strainer except for chrome thru-hulls
- Requires 1-1/16" mounting hole
- Chrome plated ABS bezels securely snap in place (replacement bezel MA-065)

3/4" Elbow flanged thru-hulls

	Qwik-Lok	Barbed
Black	MA-027-QLB	MA-027-B
White	MA-027-QLW	MA-027-W
Chrome	MA-028-QL	N/A

- Compatible with MA-018 snap-in strainer except for chrome thru-hulls
- Requires 1-1/16" mounting hole
- Chrome plated ABS bezels securely snap in place (replacement bezel MA-065)

3/4" Elbow double nut thru-hulls

	Qwik-Lok	Barbed
Black	MA-007-QLB	MA-007-B
White	MA-007-QLW	MA-007-W

- Compatible with MA-018 snap-in strainer except for chrome thru-hulls
- Requires 1-1/16" mounting hole
- Chrome plated ABS bezels securely snap in place

3/4" FITTINGS

CONNECTORS AND ADAPTORS

**3/4" Qwik-Lok Adaptor for Attwood®****MA-034**

- Qwik-Lok adaptor for Attwood® pumps

**3/4" Qwik-Lok × 3/4" NSPF****MA-021**

- Fits Attwood pump intake and outlet threads
- Fits most pump inlets for remote mounting of pump
- Will also fit Johnson Pump outlet when an extra gasket is used

**3/4" Qwik-Lok × female thread for Rule® Pumps****MA-037**

- Used exclusively for the outlet of Rule Tournament Series pumps to adapt to Qwik-Lok

**3/4" Qwik-Lok × garden hose thread****MA-031**

- Primarily used on some ballast bags requiring garden hose threads

**3/4" Qwik-Lok × 3/4" NPT****MA-029**

- Primarily used in body of Flow-Rite control valves when pump is mounted remotely and for use on V5 Pump-out valves

**3/4" Qwik-Lok × 1/2" NPT****MA-035**

- Primarily used on second inlet of Rule Tournament Series and other pumps for the feed to a separate washdown pump

**3/4" Qwik-Lok × 3/4" barbed****MA-032**

- Used to provide a quick disconnect from an existing 3/4" hose or a transition from barbed to Qwik-Lok

**Adaptor, 3/4" barb × 3/4" NPT****MD-00041**

- Used on barbed versions of the V5 pump-out valve body for intake from a recirculation pump

**Adaptor, 3/4" barb elbow × 3/4" NPT****MD-00042**

- Used on barbed versions of the V5 pump-out valve body for intake from a recirculation pump

**3/4" Qwik-Lok tee****MA-026-QLB**

- Combined with MA-014 and/or MA-025 sockets, the tee is very versatile, offering numerous configurations

3/4" FITTINGS

DRAIN FITTINGS



3/4" Threaded port drain fittings

Qwik-Lok

Straight MA-075-QLB

Elbow MA-074-QLB

- Requires 1-1/16" mounting hole
- Compatible with MA-005 or MA-023 strainers



3/4" Open port drain fittings

Qwik-Lok

Straight MA-188-QLB

Elbow MA-187-QLB

- Requires 1-1/16" mounting hole
- Compatible with MA-022 drain plug



3/4" Low profile drain fitting with strainer

Qwik-Lok

Black MA-076-QLB

- Requires 1-1/16" mounting hole
- Includes strainer

DRAIN SCREENS AND PLUGS



3/4" Snap-in strainer

MA-018

- Stainless steel screen
- Compatible with MA-027 and MA-011 series fittings



3/4" Snap-in strainer, small

MA-019

- Stainless steel screen
- Compatible with MA-027 and MA-011 series fittings.



3/4" Screw-on strainer

MA-023

- Stainless steel screen
- Compatible with MA-007 series fittings



3/4" Screw-on strainer, small

MA-005

- Stainless steel screen
- Compatible with MA-007 series fittings



3/4" Push-in drain plug

MA-022

- Compatible with MA-027 and MA-011 series fittings

OTHER ESSENTIALS FOR 1-1/2", 1-1/8", AND 3/4" FITTINGS



3/4" Hose (1 foot)	MD-H06
1-1/8" Hose (1 foot)	MD-H09
1-1/2" Hose (1 foot)	MD-H12

- Our hose is made in USA with unmatched consistency in dimension and quality. This consistency ensures a perfect fit to all Flow-Rite barb and Qwik-Lok components.



3/4" Oetiker crimp clamp	MD-00111
1-1/8" Oetiker crimp clamp	MD-00130
1-1/2" Oetiker crimp clamp	MD-00233

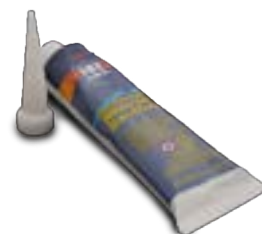
- Used for securing hose to Qwik-Lok socket
- Requires MD-110 crimping tool



Crimping tool	MD-110
----------------------	---------------



O-ring lubricant	MD-123
-------------------------	---------------



Marine sealant	MD-00068
-----------------------	-----------------

Aerators

POWERSTREAM AERATOR

The PowerStream aerator features a Venturi air intake at the top of the discharge head that is designed to ensure the highest oxygen to water ratio possible. The mixing tube injects the turbulent mix directly to all areas of the livewell through the adjustable discharge nozzle at the bottom of the tube.

- Use with transom mounted fill pump or a livewell mounted recirculation pump
- Discharge can be rotated 360 degrees for the most efficient current
- Easily remove the aerator tube without tools for cleaning or backflushing of pump lines

	Length	Qwik-Lok	Barbed
PowerStream aerator w/ thru-hull, standard	9"	MH-PSA-209	MH-PSA-109
PowerStream aerator w/ thru-hull, long	15"	MH-PSA-215	MH-PSA-115
PowerStream aerator w/ thru-hull, extra long	22"	MH-PSA-222	MH-PSA-122

**Optional aerator guard MA-108*



POWERSTREAM NOZZLE

The PowerStream nozzle features a unique Venturi air intake that maximizes livewell oxygen levels by infusing the incoming water with fresh air. A special elbow thru-hull fitting is included.



Venturi Air-Intake

Pulls in air to begin oxygenating water before the mix enters the tank.

Discharge Nozzle

Rotate the nozzle to easily direct stream for maximum circulation of oxygenated water.



- Nozzle may be rotated left or right to promote livewell water circulation

	Qwik-Lok	Barbed
PowerStream nozzle w/ thru-hull	MH-PSN-200	MH-PSN-100

PUMP-OUT AERATOR

The Flow-Rite Pump-Out aerator is the easiest, most efficient means of adding a pump-out system to your current livewell system.

The pump-out feature provides a convenient means of filling a tournament livewell weigh-in bag and allows a livewell to be pumped out while still in the water.

The two-position head is pushed in to bring water into the livewell where it is recirculated and aerated. Pull the head to the out or "pump-out" position to divert the water from the livewell to the discharge thru-hull. With a recirculation system such as our V3 or V4 systems, this can be done with a single pump. The head can also be rotated to promote a desirable circular current.



Pump-Out Port

Conveniently connect to pump-out thru-hull.

Intake Port

Easy connect to circ pump.



Discharge Nozzle

Rotate the nozzle to easily direct stream for maximum circulation of oxygenated water.

Venturi Air-Intake

Pulls in air to begin oxygenating water before the mix enters the tank.

Aerator Head

Simply pull to pump-out and push to aerate.



- A special thru-hull fitting is available for use with the Pump-Out aerator. MA-020-B (barbed) and MA-020-QLB (Qwik-Lok)

	Qwik-Lok	Barbed
Pump-out aerator	MA-024-QLR	MA-024-R
Pump-out aerator retail pack (includes thru-hull and instructions)	MP-1200	MP-1000
Discharge straight thru-hull (with decal)	MA-020-QLB	MA-020-B
Discharge elbow thru-hull (without decal)	MA-027-QLB	MA-027-B

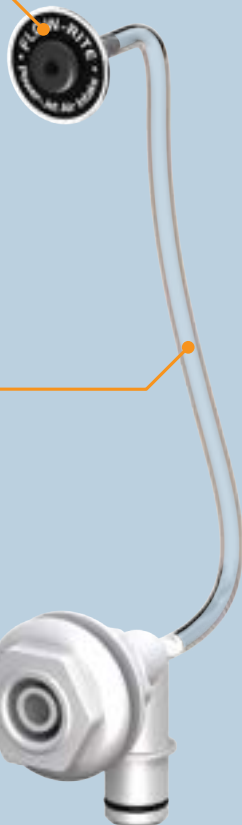
POWER-JET AERATOR

The Power-Jet aerator is designed to promote proper water circulation. Mounted near a corner of the livewell, it can be used with a livewell mounted aerator pump only or with our V2, V3, or V4 systems. (It is not for use with a transom mounted pump.) Includes a special air intake fitting with gasket and nut.



Remote Venturi Intake

Venturi air intake has many mounting options and can be mounted anywhere above water level. Shown here with an optional decal.



Air Intake Tubing

Easily routed and may be cut to length to suit your specific needs.

	Qwik-Lok	Barbed
PJA w/ air intake assy (no decal, no air tubing)	MH-PJA-200	MH-PJA-100
PJA w/ air intake assy & 20' air tubing (no decal)	MH-PJA-220	MH-PJA-120
Air tubing, 3/16" I.D. (sold by foot)	MD-055	
Domed decal, single white lettering	MD-DCL-016-W	
Domed decal, double white lettering	MD-DCL-017-W	



MD-DCL-016-W



MD-DCL-017-W

POWER-JET PARTS



Air-intake tubing, (order length in feet)

Air-intake tubing

MD-00055

- 3/16" I.D. clear PVC tubing for remote air-intake
- Used with Power-Jet Venturi aerator and MA-012-B air-intake assembly



Air-intake assembly

MA-012-B

- Used with MD-055 air-intake tubing to provide remote air to Power-Jet Venturi aerator
- Intake hole is 3/16" hex key for installation convenience
- Compatible with Power-Jet aerator decals

SPRAY HEAD AERATORS



	Qwik-Lok	Barbed
Spray head, straight	MA-071-QLW	MA-071-W

- Spray head may be rotated to promote livewell water circulation



	Qwik-Lok	Barbed
Spray head with shut-off	MA-051-QLW	MA-051-W

- Fully adjustable from off to fully open
- Ideal for use with single fill pump routed to two or more bait or livewells
- Not for use with V2 or V3 automatic systems



	Qwik-Lok	Barbed
Spray head, elbow	MA-077-QLW	MA-077-W

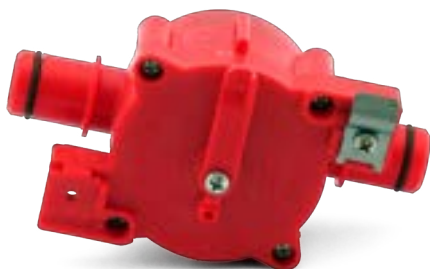
- Spray head may be rotated to promote livewell water circulation



Valves, Actuators, and Cables



V1 TWO-POSITION SHUT OFF VALVE



	Cable Direction	3/4"	1-1/8"
Qwik-Lok	N/A	MV-11-FN01	MV-5A-FN01
Barbed	N/A	MV-01-FN01	N/A

- Remote drain control for any boat's livewell, baitwell or cooler
- Operates with the MC-1-01-100 actuator
- 1-1/8" Shut off valves are commonly used to provide control for ballast systems, open and closed modes



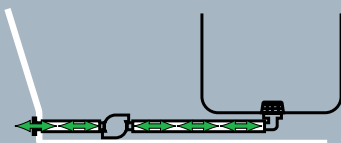
OPEN | CLOSED



V1 Actuator

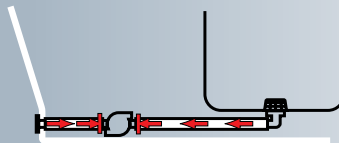
MC-1-01-100

V1 VALVE POSITIONS



OPEN

In the OPEN position, the valve is wide open and water will flow freely in either direction.



CLOSED

In the CLOSED position, the valve is shut off on both sides and water is not allowed to pass in either direction.

V2 TWO-POSITION AUTOMATIC VALVE



	Cable Direction	Non-PEF	PEF*
Qwik-Lok	Front	MV-12-FN01	MV-12-FP01
	Rear	MV-12-RN01	MV-12-RP01
Barbed	Front	MV-02-FN01	MV-02-FP01
	Rear	MV-02-RN01	MV-02-RP01

- Ideally used in bassboats, flats boats, and other low profile boats for automatic drain control and livewell management
- Accepts mounting of one standard aerator pump for both filling and recirculation
- Operates with the MC-1-02-100 actuator

EMPTY | AUTO

V2 Actuator

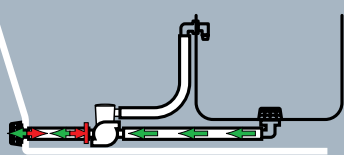
MC-1-02-100

*PEF or Pressure Equalization Flapper.
More info on page 22

V2 VALVE POSITIONS

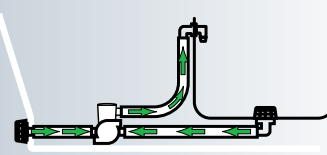
EMPTY

In the EMPTY position of systems V2 & V3, water is allowed to exit the livewell drain, but is not allowed to enter. For system V4, EMPTY allows water to pass in either direction.



AUTO

When on plane, the AUTO position allows water to enter the valve and pump from both outside and from the livewell. When on plane, the outside port is closed to prevent water loss and livewell water continues to enter the valve and pump for recirculation.



V3 THREE-POSITION AUTOMATIC VALVE



	Cable Direction	Non-PEF	PEF
Qwik-Lok	Front	MV-13-FN01	MV-13-FP01
	Rear	MV-13-RN01	MV-13-RP01
Barbed	Front	MV-03-FN01	MV-03-FP01
	Rear	MV-03-RN01	MV-03-RP01

- Ideally used in bassboats, flats boats, and other low profile boats for automatic drain control and livewell management
- Accepts mounting of one standard aerator pump for both filling and recirculation
- Includes closed recirculation mode which allows addition of optional pump-out system
- Operates with the MC-1-03-100 actuator

RECIRC | EMPTY | AUTO

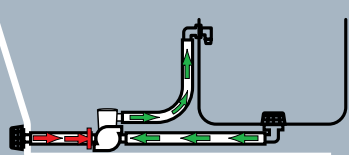
V3 Actuator

MC-1-03-100

V3 VALVE POSITIONS

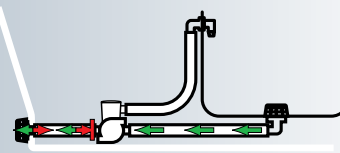
RECIRC

In the RECIRC position, the pump receives water from the livewell only. Outside water is blocked.



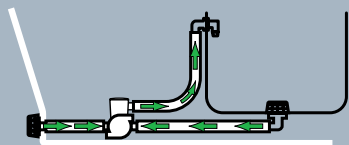
EMPTY

In the EMPTY position of systems V2 & V3, water is allowed to exit the livewell drain, but is not allowed to enter. For system V4, EMPTY allows water to pass in either direction.



AUTO

When on plane, the AUTO position allows water to enter the valve and pump from both outside and from the livewell. When on plane, the outside port is closed to prevent water loss and livewell water continues to enter the valve and pump for recirculation.



V4 THREE-POSITION SELECT VALVE



	Cable Direction	
	Front	Rear
Qwik-Lok	MV-14-FN01	MV-14-RN01
Barbed	MV-04-FN01	MV-04-RN01

- Ideally used in walleye boats or other high profile boats for drain control and livewell management
- Accepts mounting of one standard aerator pump for both filling and recirculation
- Includes closed recirculation mode which allows addition of optional pump-out system
- Operates with the MC-1-04-100 actuator

FILL | EMPTY | RECIRC

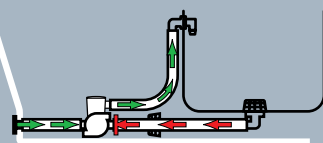


V4 Actuator MC-1-04-100

V4 VALVE POSITIONS

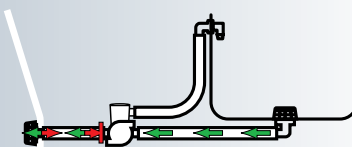
FILL

In the FILL position, the pump receives water outside water only.



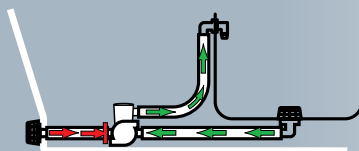
EMPTY

In the EMPTY position of systems 2 & 3, water is allowed to exit the livewell drain, but is not allowed to enter. For system 4, EMPTY allows water to pass in either direction.



RECIRC

In the RECIRC position, the pump receives water from the livewell only. Outside water is blocked.



V5 TWO-POSITION PUMP-OUT VALVE



	Cable Direction	Straight	Elbow
		Front	Rear
Qwik-Lok	Front	MV-15-FN11	N/A
	Rear	MV-15-RN11	N/A
Barbed	Front	MV-05-FN11	MV-05-FN21
	Rear	MV-05-RN11	MV-05-RN21

- Used in addition to V3, V4, or any recirculation pump (as shown here) to provide optional pump-out. (See also Pump-Out aerator for alternative method)
- Operates with the MC-1-05-100 actuator

RECIRC | PUMP-OUT

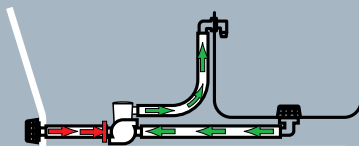


V5 Actuator MC-1-05-100

V5 VALVE POSITIONS

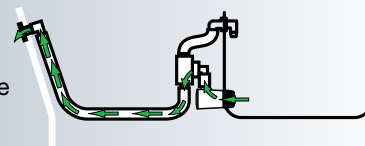
RECIRC

In the RECIRC position, the pump receives water from the livewell only. Outside water is blocked.



PUMP-OUT

In the RECIRC position, the pump receives water from the livewell only. Outside water is blocked.



THREE-POSITION BALLAST VALVE



	Cable Direction	1-1/8"
Qwik-Lok	N/A	MV-5B-FN01

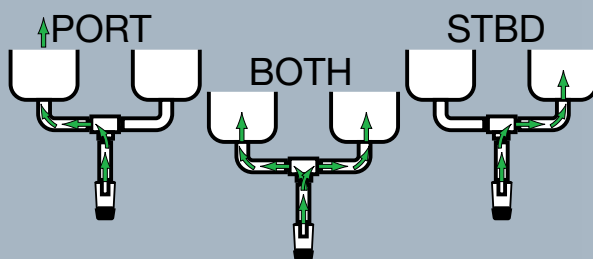


Ballast Actuator	MC-1-0B-100
------------------	-------------

- Provides control for ballast systems, port, starboard, or both modes
- Can eliminate number of pumps required
- Works with positive displacement as well as centrifugal pumps
- 1 1/8" port sizes for high flow rate
- Compatible with MA-040 & MA-049 Qwik-Lok hose sockets
- Operates with MC-1-0B-100 actuator

STBD | BOTH | PORT

THREE-POSITION BALLAST VALVE POSITIONS



The ballast valve directs water to either the port side, the starboard side or both.

CONTROL CABLES



Control Cables			
6 foot	MA-CBL-06	12 foot	MA-CBL-12
7 foot	MA-CBL-07	13 foot	MA-CBL-13
8 foot	MA-CBL-08	14 foot	MA-CBL-14
9 foot	MA-CBL-09	15 foot	MA-CBL-15
10 foot	MA-CBL-10	16 foot	MA-CBL-16
11 foot	MA-CBL-11	17 foot	MA-CBL-17

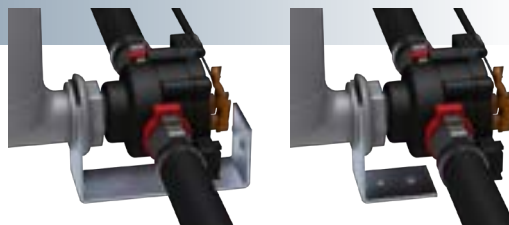
The control cables are used with our actuator and control valves and are sold separately in various lengths to accommodate the specific layout of your boat.

MOUNTING BRACKETS

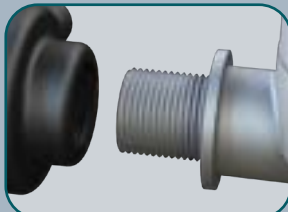


U-Bracket	MD-00034
L-Bracket	MD-00035

- Used to support valve/pump assembly
- Two 3/16" mounting holes



VALVE AND ACTUATOR INFORMATION



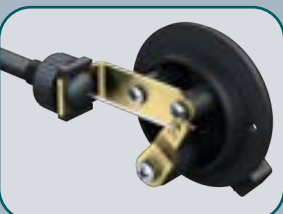
Mounting a Pump to the Valve

The valve body is threaded for mounting the inlet of a centrifugal pump. Use a hacksaw to remove all but about 1-1/4" to 1-1/2" of threads on the pump inlet. Apply Teflon tape and mount directly to the valve. A 700 to 800 GPH pump is recommended for the best performance.



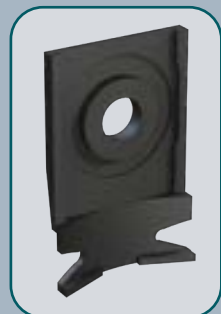
Attaching the Cable to the Valve

Insert the cable "Z" bend from the valve cap side and position the clamp directly behind the enlarged section of cable jacket as shown.



Installing the Cable Actuator

Insert cable wire through hole in brass arm as shown. Then, position cable assembly into brass bracket U-slot and secure finger tight with knurled nut. Carefully push assembly into 1-3/4" mounting hole and secure with two P/N MD-093 screws (#6-32, truss head, black oxide, stainless steel).



P.E.F. (Pressure Equalization Flapper)

Only specify PEF for higher profile walleye and bay boats where the livewell overflow is 8"-12" above lake level. If it is more than 12", use the V4 valve. PEF is not generally required for low profile bass boats.

While off plane and in the AUTO position, water enters the valve from both the livewell drain and the transom thru-hull. As the water level in the livewell increases, so does the pressure on the transom check feature of the valve, reducing the ratio of fresh to recirculated water. When this pressure is too great, PEF insures that enough fresh water is added to force the upper used water out.



Front Approach



Rear Approach

Cable Approach

Some valves have two cable approach options. The cable can approach the valve from either the front/livewell side or the rear/transom side of the boat.

PROTIMER AND PROTIMER PLUS+

ProTimer™ and ProTimer Plus+™ are adjustable timers for your livewell tank. This product automatically turns your pump on and off for the desired circulation and aeration. It helps conserve battery life, is easy to install, and simple to operate so you can spend more time fishing.

ProTimer Plus+™ has all the features of ProTimer™, plus it comes with a master control switch to control on, off or timed livewell operation.

ProTimer	MP-103
ProTimer Plus+	MP-104

- No moving parts
- Unrestricted flow path
- For fresh and saltwater applications
- Compatible with centrifugal aerator pumps
- Compact size for ease of installation



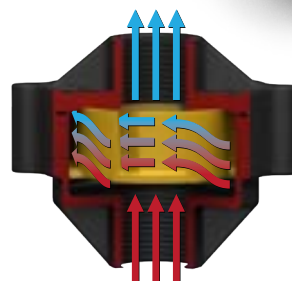
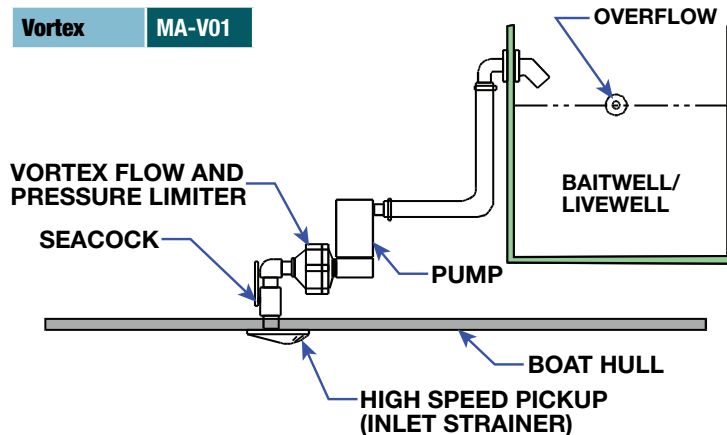
ProTimer™



ProTimer Plus+™

VORTEX TO REGULATE WATER PRESSURE AND FLOW

Install a Vortex between your high speed pickup and pump inlet to regulate incoming water pressure and flow. Vortex works at any boat speed without operator assistance. Vortex promotes maximum pump life in all applications and protects sensitive fish from excessive pressure in livewell and baitwell applications.





SEALOK™ REMOTE DRAIN PLUG



With today's high performance hull designs, jack plates and larger outboards, putting a drain plug in or taking one out can be a very unpleasant task. The Flow-Rite remote drain plug makes that job as simple as turning a switch.

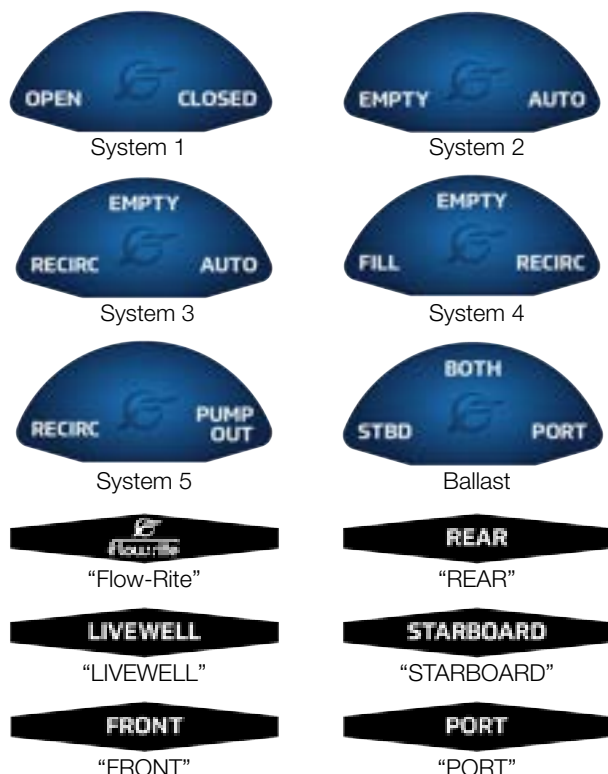


Remote drain plug with 6' cable	MA-RDP-006
Remote drain plug with 8' cable	MA-RDP-008
Remote drain plug with 10' cable	MA-RDP-010
Plug end assembly	MA-RDP-1000
Remote drain plug actuator	MC-1-D7-100
Gasket	MD-00209

- No more lying on a wet boat ramp to put in or take out a drain plug
- Never worry about forgetting your drain plug again!
- Easily open or close your drain plug from your console
- Easy to install on any fiberglass or aluminum hull with a 1" mounting hole
- Fresh or saltwater use

REPLACEMENT PARTS & HARDWARE

ACTUATOR DECALS

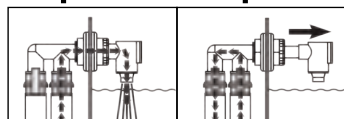


Upper Decals	
System 1	MD-DCL-001-WHT
System 2	MD-DCL-002-WHT
System 3	MD-DCL-003-WHT
System 4	MD-DCL-004-WHT
System 5	MD-DCL-005-WHT
Ballast	MD-DCL-026-WHT
Knob Decals	
Flow-Rite logo	MD-DCL-010-WHT
"Livewell"	MD-DCL-011-WHT
"Front"	MD-DCL-012-WHT
"Rear"	MD-DCL-013-WHT
"Starboard"	MD-DCL-014-WHT
"Port"	MD-DCL-015-WHT

- New modern design now available

PUMP-OUT AERATOR OPERATION LABEL

Pump-Out Valve Operation



To pump-out, pull the Power-Nozzle aerator head to position shown.

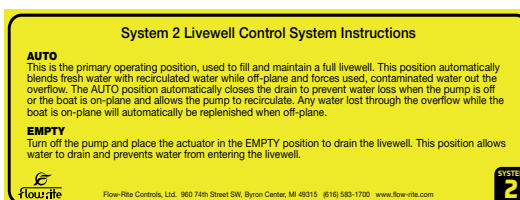
Note: Be sure you are operating in recirculation mode.



POA operation label MD-LBL-004

- Operation instructions for the Pump-out aerator

SYSTEM OPERATION LABELS



System 1	MD-LBL-012
System 2	MD-LBL-013
System 3	MD-LBL-014
System 4	MD-LBL-015

- Operation instructions for the Flow-Rite livewell control systems shown in the valves section

CHROME BEZELS



3/4" Bezel	MA-065
1-1/8" Bezel	MA-066

- Chrome plated ABS bezels securely snap in place
- 3/4" bezel for use with MA-016 & MA-028 series thru-hulls
- 1-1/8" bezel for use with MA-063-QLB & MA-064-QLB thru-hulls

O-RINGS



Fits 3/4" Qwik-Lok socket	MD-00014
Fits 1-1/8" Qwik-Lok socket	MD-00066
Fits Remote Drain Plug	MD-00202

- Replacement O-rings for Flow-Rite Marine parts

REPLACEMENT PARTS & HARDWARE

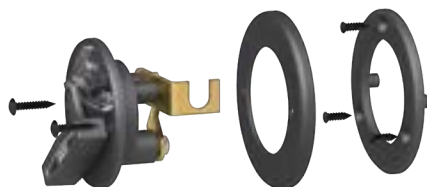
ACTUATOR ADAPTOR PLATE



The two part adapter plate converts a 2-1/16" hole down to 1-3/4" allowing boats equipped competitive systems to be upgraded to a Flow-Rite actuator

Actuator adaptor plate

MA-010



SCREWS



#6-32 x 1/2"

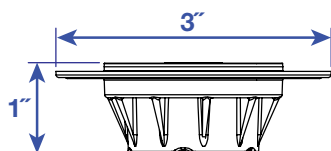
MD-00086

#6-32 x 3/4"

MD-00093

- #6-32 x 1/2", oval head, black oxide, stainless steel
- Used for mounting of MA-010 adapter plate and original style cable actuators with tapered holes. See MD-093 for mounting of new style actuators
- #6-32 x 3/4", truss head, black oxide, stainless steel
- Used for the mounting of cable actuators

BALLAST BAG FLANGE



Ballast bag flange, Orange

MA-218

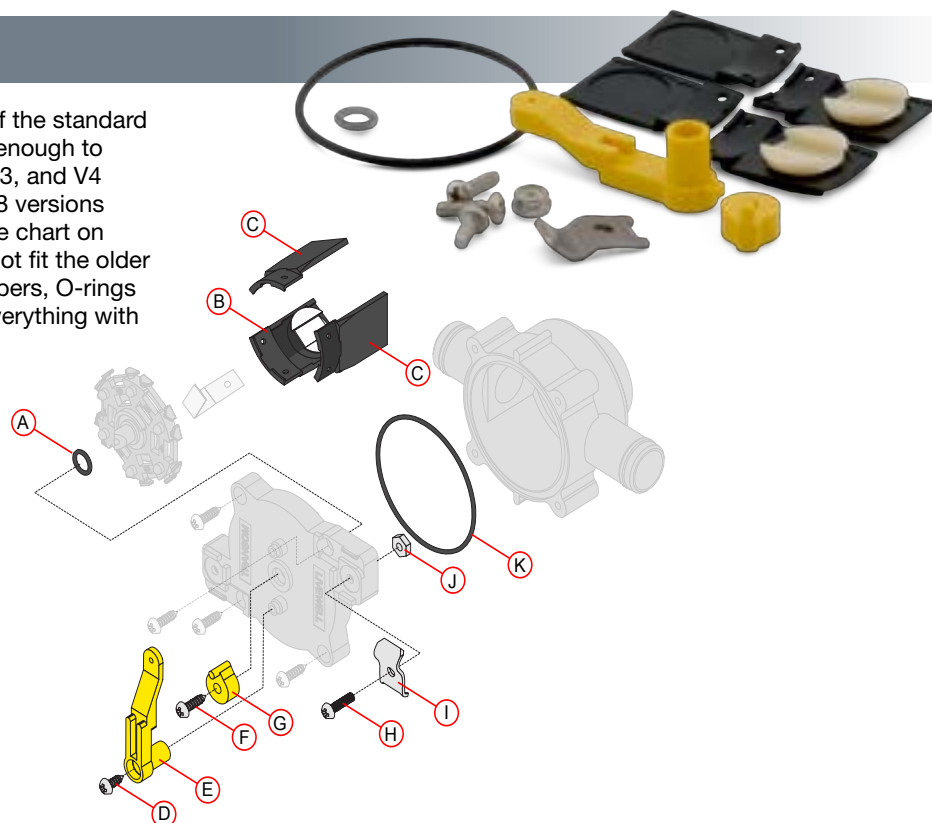
- Threaded flange for use in ballast bags
- 1" NPT thread
- O-ring seal ensures a water tight connection
- Must be welded in place

VALVE REPAIR KIT

The valve repair kit includes 2 each of the standard and button flappers that will provide enough to replace any requirement for V1, V2, V3, and V4 valves, with the exception of pre 1998 versions of V1; replace with new V1 valve. (See chart on reverse). The valve arm and link will not fit the older RCV-75 valves, but the standard flappers, O-rings and cable mounting bracket will fit everything with the above mentioned exception.

Valve repair kit

MA-060



[illegible]

For the fastest processing, please submit all orders in .pdf format. Purchase orders can be emailed to **orders@flow-rite.com**.

Flow-Rite accepts cash in advance, Visa, Mastercard, Discover, American Express or Net 30 days for companies with approved credit.

EXW - Ex Works: Flow-Rite,
Byron Center, MI, USA

FOB Origin

Flow-Rite's preferred shipping method is via FedEx. If an alternate shipper is required by the customer, you will need to provide the billing account number at the time the order is placed.

Typical order lead times are 2-5 business days.
Actual lead times vary based on order volume.
For specific questions, please contact your sales
manager or customer service.

1 Year Limited Warranty for Marine Products

Flow-Rite Controls warrants to Purchaser that its product, will be free of all defects in material and workmanship for one (1) year after the date of purchase. If within one year of the date of purchase, the marine product, fails to perform due to a manufacturing defect, Flow-Rite Controls will repair or replace the product, free of charge. A Return Authorization Number must be obtained from Flow-Rite Controls (through your supplier) prior to returning product for warranty consideration. Purchaser must send any product covered under this warranty, along with a copy of supplier's invoice and description of the problem to:

Flow-Rite Controls, 960 74th St SW,
Byron Center, MI 49315.

For full warranty information, visit **www.flow-rite.com/resources/marine-literature/** or submit an inquiry to **customerservice@flow-rite.com**

- Flow-Rite is happy to provide a full refund for parts returned in new condition within 30 days.
- There is a 15% restocking fee for parts returned in new condition after 30 days.
- Products with a date code will be eligible for return up to 90 days. Products without a date code, in new condition, will be eligible for return past 90 days if they are current and saleable. Non-current production items will be eligible for return at Flow-Rite's discretion.





Flow-Rite Controls, Ltd.

960 74th Street SW

Byron Center, MI 49315

ph (616) 583-1700

www.flow-rite.com

Made in USA



© 2022 Flow-Rite® All rights reserved. Flow-Rite is not liable for damages that may result from any information provided in or omitted from this publication, under any circumstances. Flow-Rite reserves the right to make adjustments to this publication at any time without notice or obligation.

Product names, logos, brands and other trademarks referred to within this publication are the property of their respective trademark holders.

MM-CAT-MARINE-0722

