

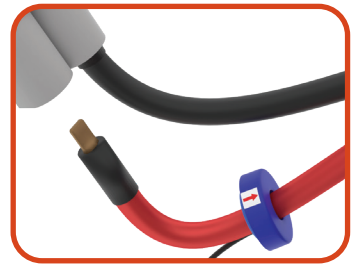
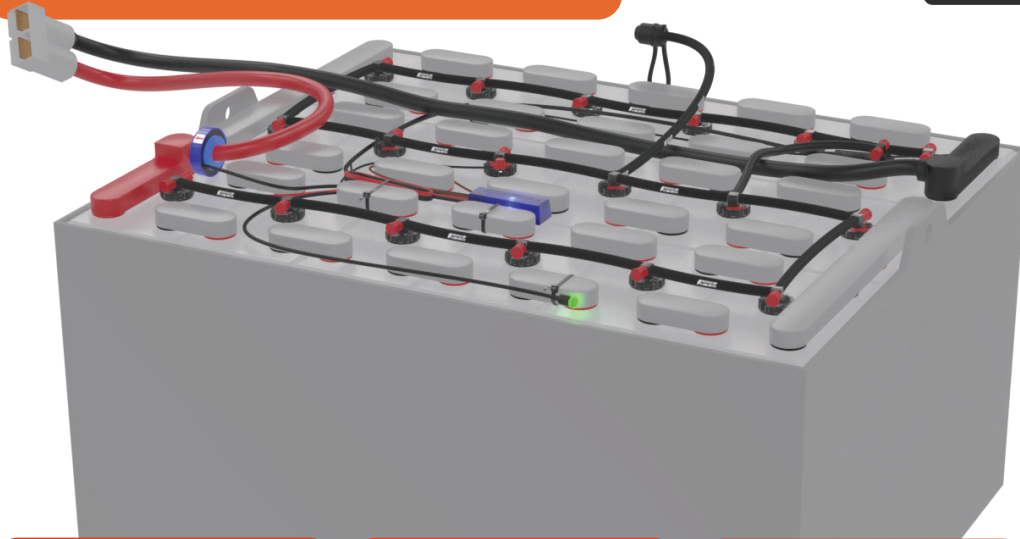


## TRACKER HARDWARE INSIDE

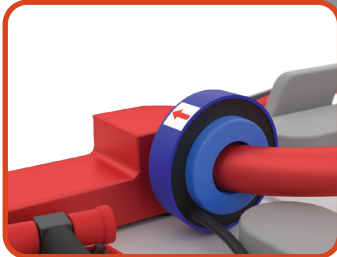
| Contents                                | Specifications                                 | Tools Required           |
|---|--|--------------------------|
| (1) Tracker hardware                    | Max current draw: 20 mA                        | Power drill              |
| (3) Stainless steel self tapping screws | Operating voltage range 12-48 VDC full battery | 1/4" hex head driver bit |
| Zip ties                                | Operating temperature: 0-180° F                | No-ox grease             |
| (1) Instruction sheet                   |  |                          |

For a detailed installation video and more information,  
go to [www.batterysteward.com](http://www.batterysteward.com)

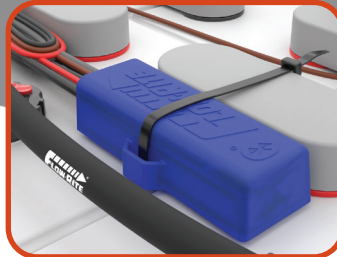
# INSTALLATION INSTRUCTIONS: Tracker Hardware



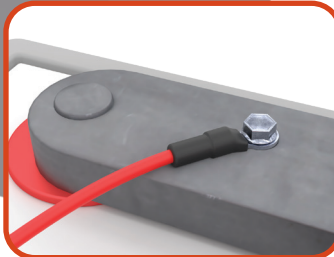
**Step 1:** Remove the positive cable from the battery connector. Place the current sensor over the cable with the arrow pointing towards the battery.



**Step 2:** Slide the sensor all the way down to the battery post and re-insert the battery cable into the connector.



**Step 3:** Secure the tracker to an inter-cell connector with a supplied zip-tie.



**Step 4:** Using the supplied self tapping screws, anchor the positive lead (red wire) to the positive battery post and the negative lead (black wire) to the negative post.



**Step 5:** Anchor the half voltage lead (brown wire) to an inter-cell connector halfway between the positive and negative posts. Coat all anchored hardware with supplied no-ox grease.



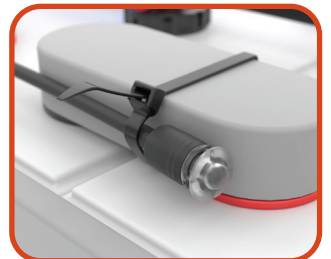
**Step 6:** Remove the tubing and swivel tee from a valve near the center of the battery.



**Step 7:** Remove the valve. Replace with the in-valve sensor. Reinstall the swivel tee and tubing to the sensor valve.



**Step 8:** Remove a red end cap from a valve near the feed tube. Install the pressure sensor with the supplied piece of tubing as shown.



**Step 9:** Zip tie the light to a visible location or use mounting bracket to secure the remote LED light.



**Step 10:** Secure any loose wires with zip-ties.



**Flow-Rite**  
960 74th St.  
Byron Center, MI 49315  
phone: 616-583-1700  
fax: 616-878-5151

BL-629 / 081120