

 **Advanced**
BatterySteward®
with tracking intel

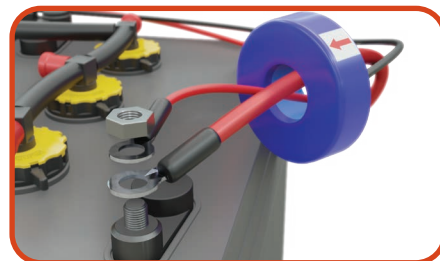
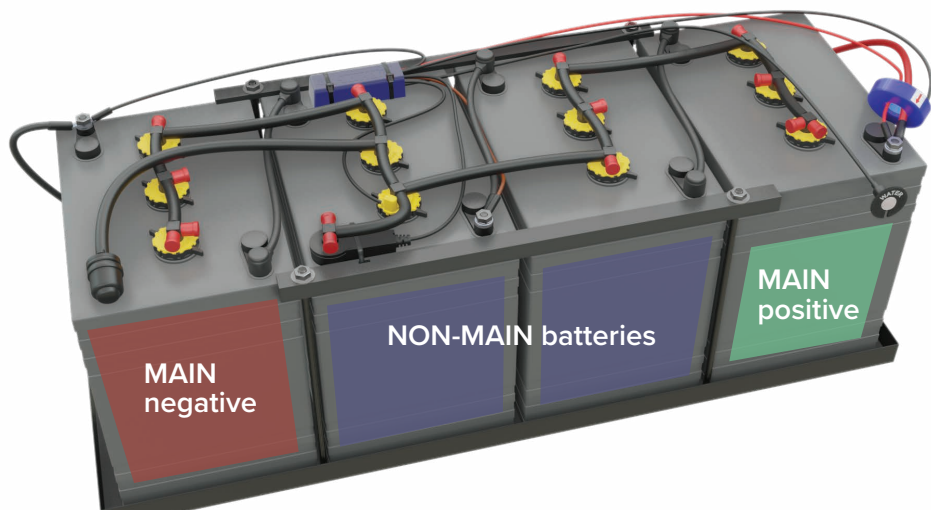


TRACKER HARDWARE INSIDE

Contents	Specifications	Tools Required
(1) Tracker hardware	Max current draw: 20 mA	Dielectric grease
Zip ties	Operating voltage range 12-48 VDC full battery	1/2" and/or 9/16" wrench
(1) Instruction sheet	Operating temperature: 0-180° F	

For a detailed installation video and more information,
go to www.batterysteward.com

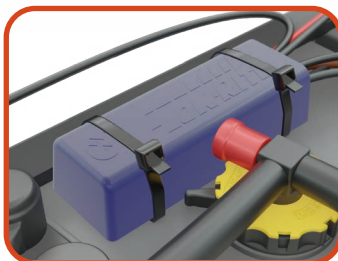
INSTALLATION INSTRUCTIONS: Tracker Hardware



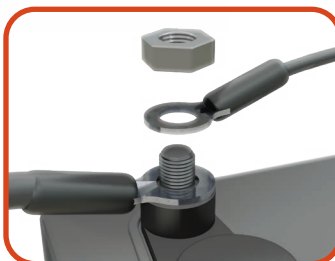
Step 1: Remove nut on the red battery post. Insert all power wires (including the Tracker red wire) through the current sensor. Make sure the red arrow on the current sensor is pointing toward the battery post.



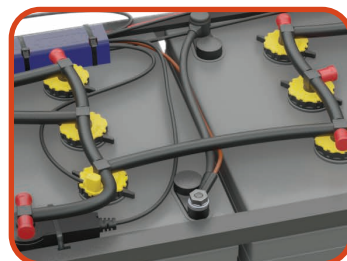
Step 2: Reinstall the nut on the red battery post and position the current sensor close to the post. Make sure your power wires are not kinked when arranging the sensor and wires.



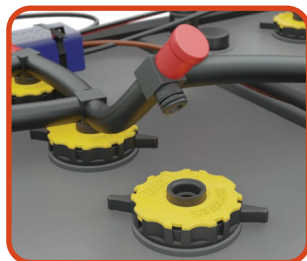
Step 3: Find a secure location for the Tracker main housing. On top of the battery is preferred. However, if it is installed securely with zip ties, any flat surface would work.



Step 4: Remove the nut on the black battery post. Install the Tracker black wire ring terminal on the post and reinstall the nut.



Step 5: Anchor the half voltage lead (brown wire) halfway between the positive and negative posts. *Note: Coat all anchored hardware with supplied no-ox grease.*



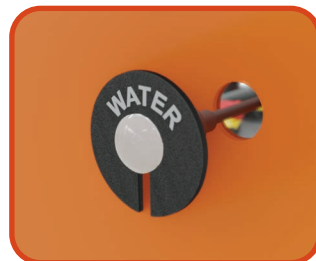
Step 6: Remove the tubing and swivel tee from a valve near the center of the battery. Make sure it is a valve in a NON-MAIN battery. (see illustration above)



Step 7: Remove the valve. Replace with the in-valve sensor. Reinstall the swivel tee and tubing to the sensor valve.



Step 8: Remove a red end cap from a valve near the feed tube. Install the pressure sensor with the supplied piece of tubing as shown.



Step 9: Zip tie the light to a visible location or use mounting bracket to secure the remote LED light.



Step 10: Secure any loose wires with zip-ties.



Flow-Rite
960 74th St.
Byron Center, MI 49315
phone: 616-583-1700
fax: 616-878-5151

BL-635 / 020420