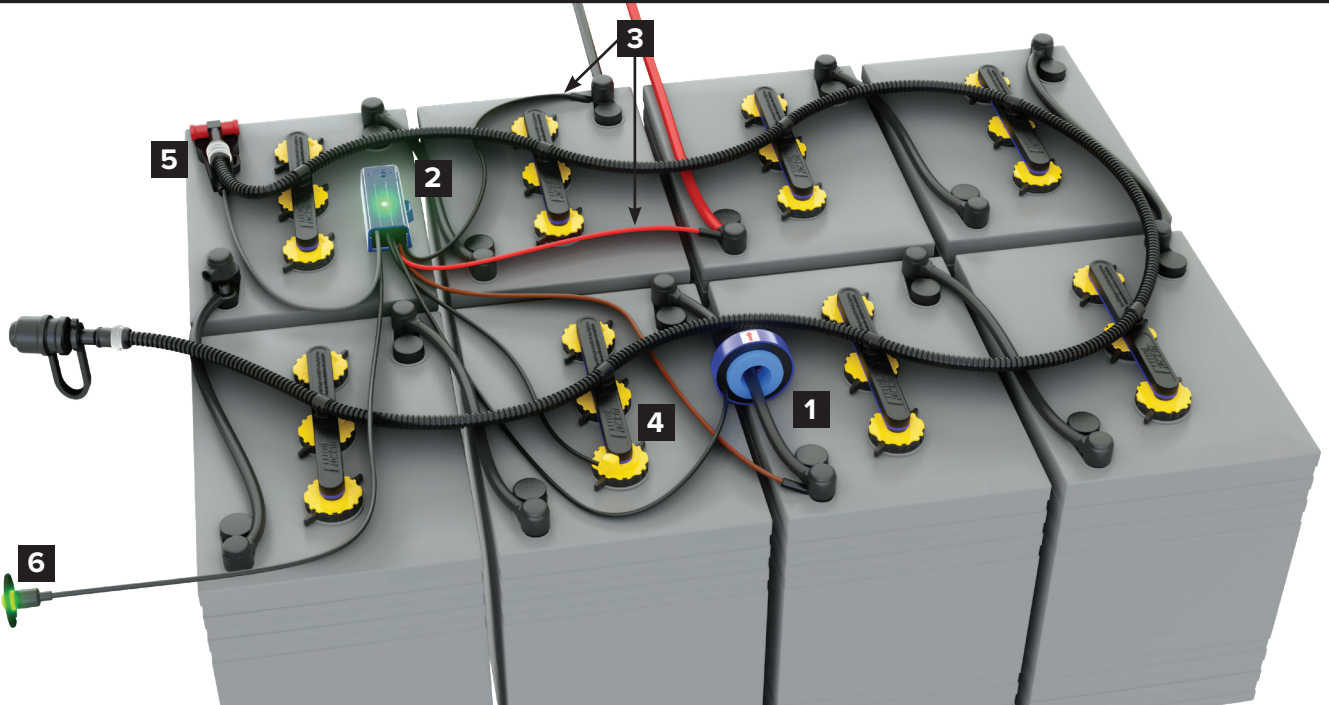


TRACKER HARDWARE INSIDE

Contents	Specifications	Tools Required
(1) Tracker hardware	Max current draw: 20 mA	No-ox grease
Zip ties & grommets	Operating voltage range 12-48 VDC full battery	1/2" and/or 5/8" wrench
(1) Instruction sheet	Operating temperature: 0-180° F	1/2" drill
(1) Adaptor		

INSTALLATION INSTRUCTIONS: Tracker Hardware



1 Current Sensor & Half-voltage wire



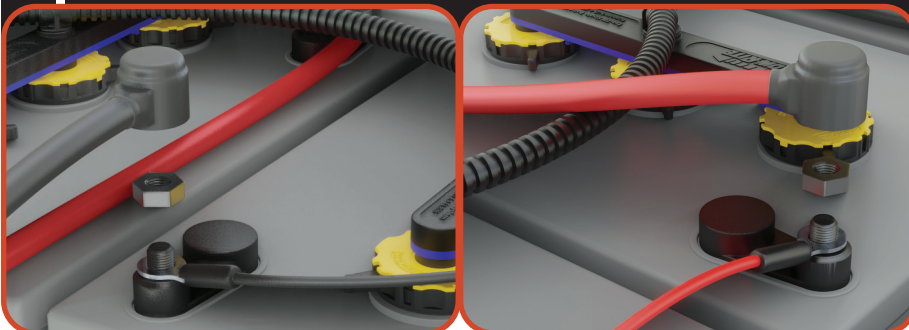
Disconnect one end of a battery connector cable in the middle of the battery pack. Insert the battery connector cable through the current sensor with the arrow indicator pointed toward the positive terminal as shown. Connect the brown wire ring to the terminal and reconnect the connector cable.

2 Tracker Main Housing



Find a secure location for the Tracker main housing. On top of the battery is preferred. If it is installed securely with zip ties, any flat surface would work.

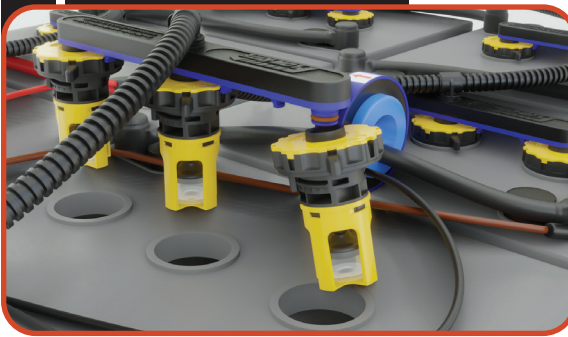
3 Black and red wires



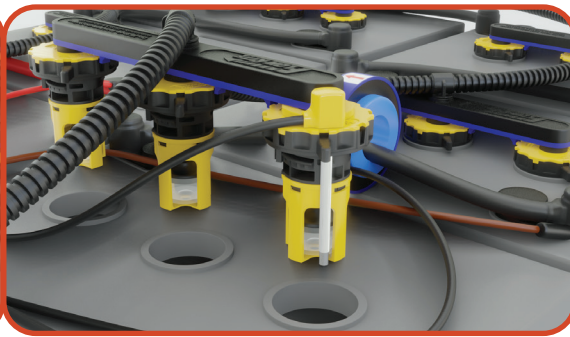
Remove the nut from the negative main battery post and connect the Tracker black wire ring. Replace the nut. Remove the nut from the positive main battery post and connect the Tracker red wire ring. Replace the nut.

NOTE: Keep wires organized when attaching sensors and secure any slack with zip-ties when install is complete.

4 Tracker In Valve Sensor



Remove a valve/manifold assembly from a center battery. Detach and discard one valve from the end of the manifold and replace with the Tracker in-valve sensor.



Replace the valve manifold assembly.



Locate the end of the snake tubing and remove the end cap. A 5/8" wrench can be used to slide the locking ring.

5 Pressure sensor and adaptor attachment



Replace the end cap with the snake adapter using 5-8 lb pressure then slide the locking ring to secure.

Push the adapter onto the barb of the Tracker pressure sensor as shown.

6 LED



Find a location to mount the LED indicator and drill a 1/2" hole. Insert the LED through the hole and place the mounting plate over the LED as shown. Remove the adhesive backing and carefully press the assembly into place.

NOTE: For instruction on how to install the included antenna, see the back of this document.



960 74th Street SW
Byron Center, MI 49315
616.583.1700
flow-rite.com
BL-640-1120