

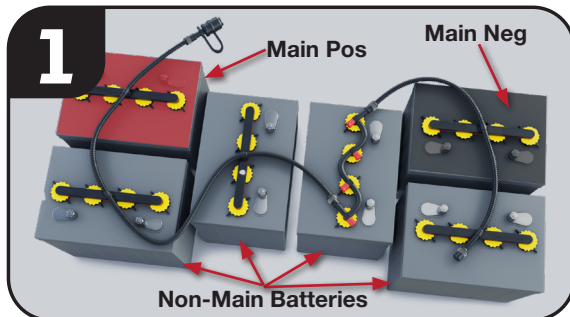
### INSTALLATION & OPERATION INSTRUCTIONS

for BG-C48V-11-EA-WS & BG-C48V-21-EA-WS

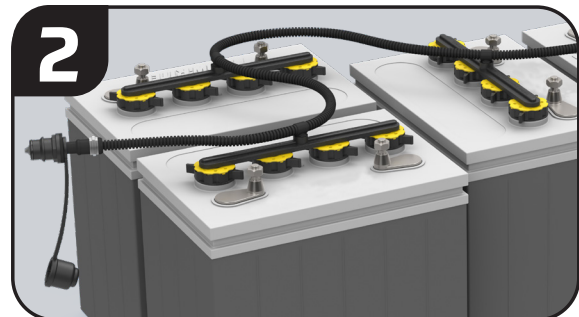
Contents
(1) Deep cycle battery level sensor
(1) Mounting plate
(1) Instruction sheet
(2) Zip ties

Tools Required
1/2" wrench
Rubber gloves
Safety glasses
1/2" drill bit (For remote use)

Specifications
Max current draw: 7mA
Nominal operating voltage: 12 - 48V
Operating temperature: -22°F - 158°F



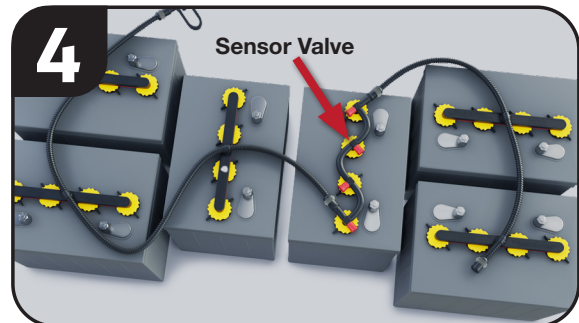
Locate your main batteries (main positive and main negative).  
**Probe must be installed in a non-main battery.**



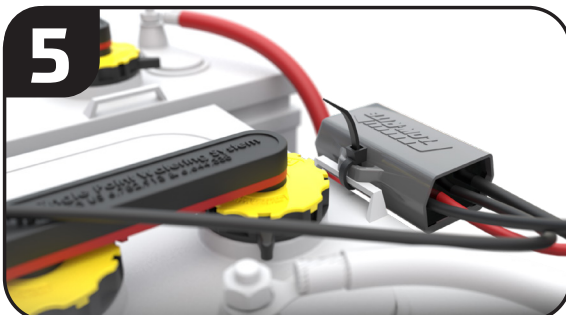
Install the valves on the rigid manifolds by inserting and twisting in to secure.  
Note: Leave battery 4 open for flex manifold.



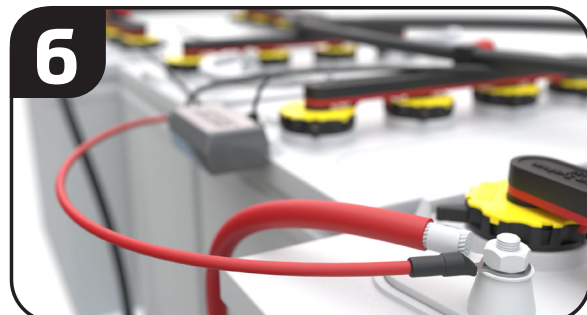
Snap the Eagle Eye sensor in the open space on the flex manifold.



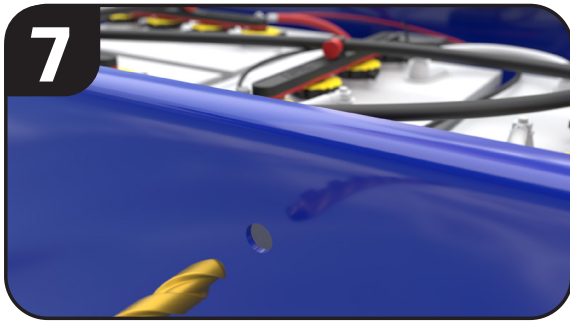
Insert flex manifold valves into battery 4 and twist in to secure. Attach snake tubing to the ends of the manifold.



Secure the control box with a provided zip tie in a secure location.



Attach the red wire to the positive terminal of the positive main battery. Connect the black wire to the negative of the negative main battery.

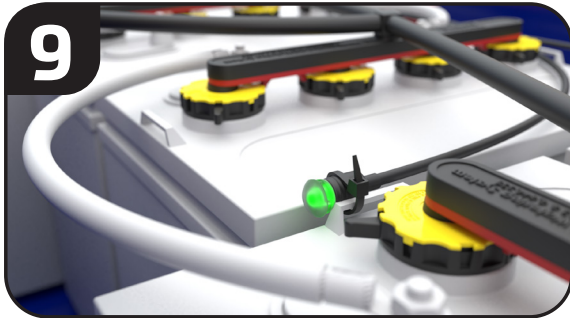


Mounting Option 1: To install the remote indicator first drill a 1/2" hole in the desired mounting location.




Feed the light through the hole and through the slot in the mounting plate. Snap the light into the plate, remove the adhesive backing and secure into place.


Not compatible with Trojan® Plus Series batteries.



Mounting Option 2: The remote light may be mounted to a secure location inside the battery compartment.

**FULL** 

Steady green light indicates full water level.

**LOW** 

Blinking red light indicates low water level. Only water after charging.

 **WARNING!**

Failure to follow these instructions or use of unapproved installation equipment may cause injury and permanent damage to the product or battery. Always use personal protection equipment when working on lead-acid batteries. Never work on batteries if they are gassing or on charge.

**NOTE:**

- This product is intended to monitor electrolyte levels inside of flooded lead acid batteries. Failure to use this product in the manner intended could compromise safety protection provided by the equipment.
- Probe should be wiped clean and terminals checked for corrosion each time the battery has preventative maintenance.



Flow-Rite Controls  
 960 74th St.  
 Byron Center, MI 49315  
 phone: 616-583-1700  
 www.flow-rite.com

