



# Eagle Eye Elite IV In-Valve Battery Level Sensor INSTALLATION & OPERATION INSTRUCTIONS

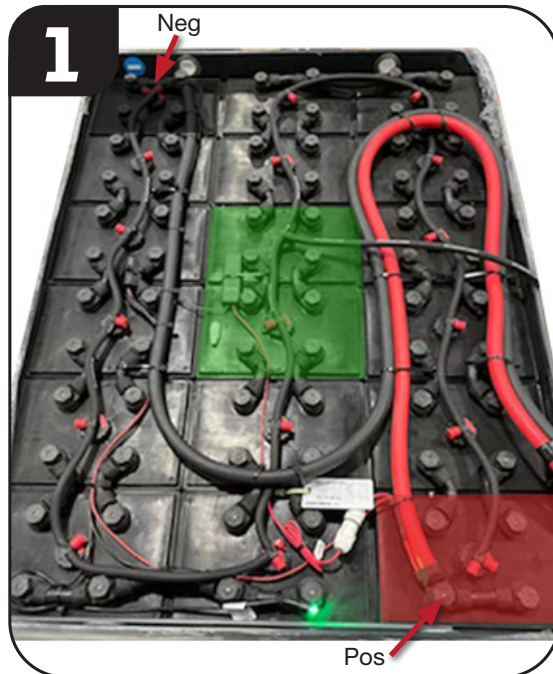
for Part Numbers: **EA-222, EA-223, EA-224, EA-225**



Contents	
(1) Eagle Eye Elite IV Electrolyte Level Sensor	(4) Zip ties
(1) Instruction Sheet	(1) Swivel tee

Tools Required
PPE
Torque wrench w/ proper sized socket

Specifications
Max current draw: 7mA
Nominal operating voltage: 12 - 48V
Operating temperature: -22°F - 158°F



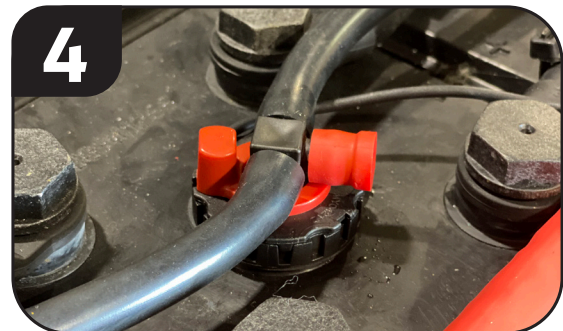
Locate your battery posts (positive and negative). We recommend that you place the probe as close to the center of the pack as possible (indicated in green above). **Probe cannot be installed within three cells from a battery post (red or black area as shown above).**



Once you have selected a centrally located valve, remove the swivel tee and valve.

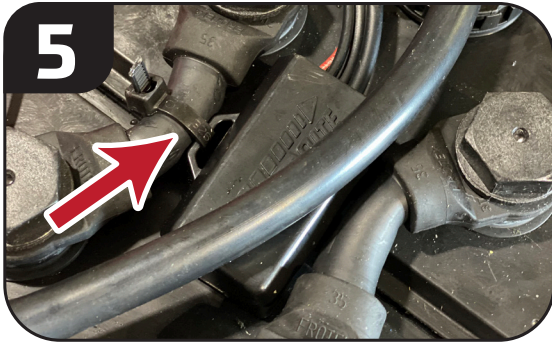


Replace with the sensor valve as shown. Use care when helping the probe find its way into the cell.



For EA-224 and EA-225, rotate clockwise to lock the valve in place and reinstall swivel tee. For EA-222 and EA-223, simply push-in the valve until it snaps in to the battery.

*If this is a new install, connect swivel tee to the valve and connect tubing.)*



Secure the control box with a zip tie in a secure location. **Do not secure to watering system tubing.**



For attaching the red and black wires, remove nuts on each battery post. **We recommend powering over the entire battery up to 48 volts.**



Attach the red wire to the positive post and the black wire to the negative post of the battery. Tighten firmly.



Position the LED light in a visible location and attach with a zip tie.

**Do not place on hose or side handles.**

#### FULL



Steady green light indicates full water level.

#### LOW



Blinking red light indicates low water level. Only water after charging.



#### WARNING!

Failure to follow these instructions or use of unapproved installation equipment may cause injury and permanent damage to the product or battery. Always use personal protection equipment (PPE) when working on lead-acid batteries. Never work on batteries if they are gassing or on charge.

#### NOTE:

- This product is intended to monitor electrolyte levels inside of flooded lead-acid batteries. Failure to use this product in the manner intended could compromise safety protection provided by the equipment.
- Probe should be wiped clean and terminals checked for corrosion each time the battery has preventative maintenance.



Flow-Rite Controls  
960 74th St.  
Byron Center, MI 49315  
phone: 616-583-1700  
www.flow-rite.com



BL-643-0721